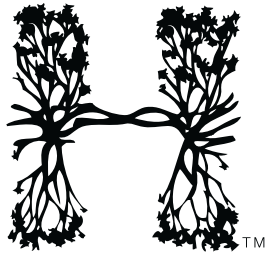
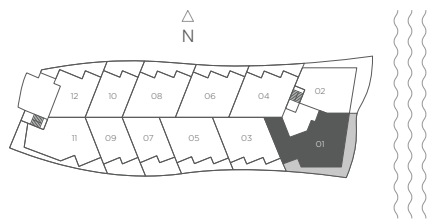


Patricio Javier Orloff
 Cervera Real Estate
 www.HydeBeachUSA.com



HYDE RESORT & RESIDENCES
 HOLLYWOOD FLORIDA

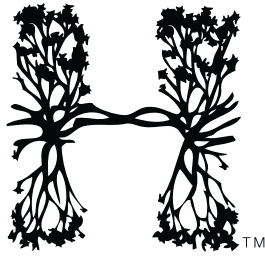


RESIDENCE 01 3 BEDROOMS 3 BATHS

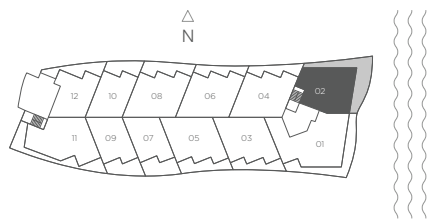
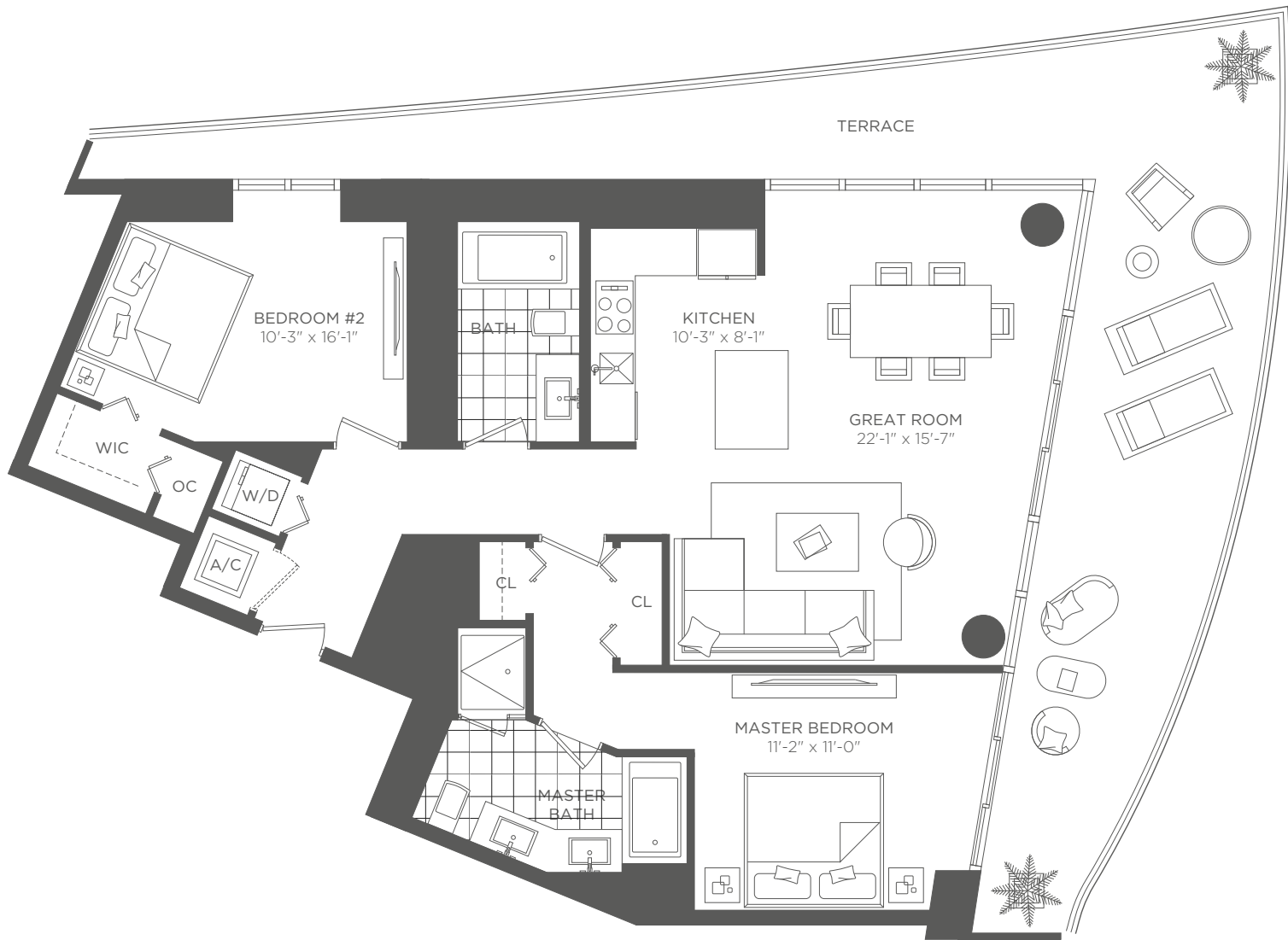
Interior 1,917 sq ft / 178.10 m² Terraces 634 sq ft / 58.90 m² Total 2,551 sq ft / 237 m²

Stated dimensions are measured to the exterior boundaries of the exterior walls and the centerline of interior demising walls and in fact vary from the dimensions that would be determined by using the description and definition of the "Unit" set forth in the Declaration which generally only includes the interior airspace between the perimeter walls (measuring from interior wall plane to interior wall plane) and excludes interior structural components. For your reference, the area of the Unit, determined in accordance with those defined Unit boundaries (from interior wall plane to interior wall plane), is 1,770 sq. ft. Note that measurements of rooms set forth on this floor plan are generally taken at the greatest points of each given room (as if the room were a perfect rectangle), without regard for any cutouts. Accordingly, the area of the actual room will typically be smaller than the product obtained by multiplying the stated length times width. All dimensions are approximate and may vary with actual construction, and all floor plans and development plans are subject to change.

Patricio Javier Orloff
 Cervera Real Estate
 www.HydeBeachUSA.com



HYDE RESORT & RESIDENCES
 HOLLYWOOD FLORIDA

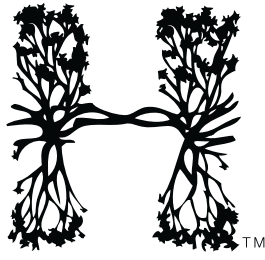


RESIDENCE 02 2 BEDROOMS 2 BATHS

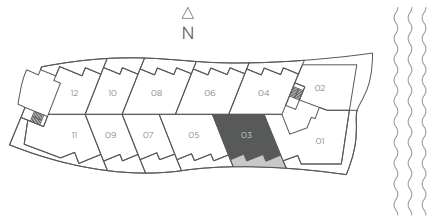
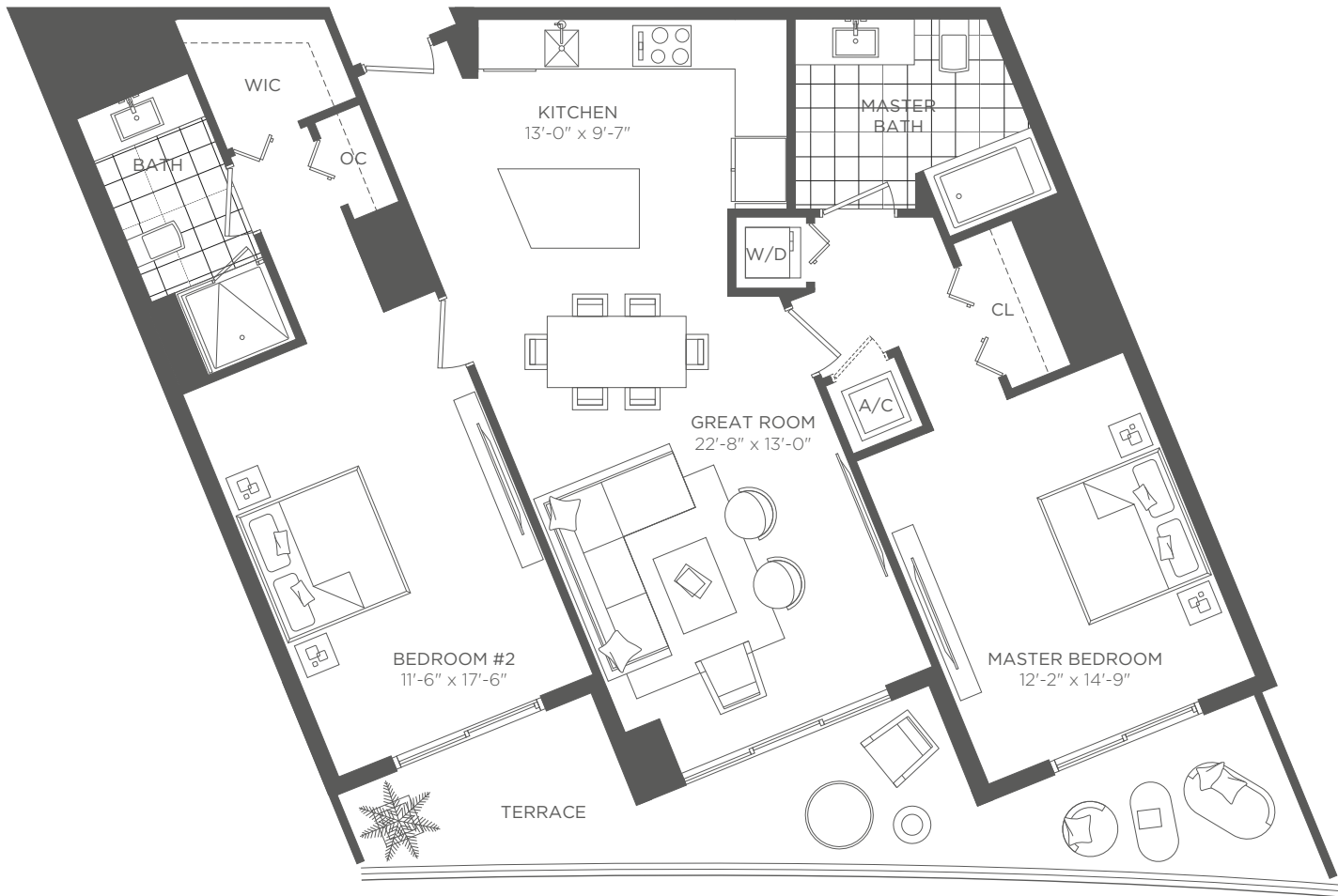
Interior 1,310 sq ft / 121.70 m² Terraces 600 sq ft / 55.74 m² Total 1,910 sq ft / 177.44 m²

Stated dimensions are measured to the exterior boundaries of the exterior walls and the centerline of interior demising walls and in fact vary from the dimensions that would be determined by using the description and definition of the "Unit" set forth in the Declaration which generally only includes the interior airspace between the perimeter walls (measuring from interior wall plane to interior wall plane) and excludes interior structural components. For your reference, the area of the Unit, determined in accordance with those defined Unit boundaries (from interior wall plane to interior wall plane), is 1,308 sq. ft. Note that measurements of rooms set forth on this floor plan are generally taken at the greatest points of each given room (as if the room were a perfect rectangle), without regard for any cutouts. Accordingly, the area of the actual room will typically be smaller than the product obtained by multiplying the stated length times width. All dimensions are approximate and may vary with actual construction, and all floor plans and development plans are subject to change.

Patricio Javier Orloff
 Cervera Real Estate
 www.HydeBeachUSA.com



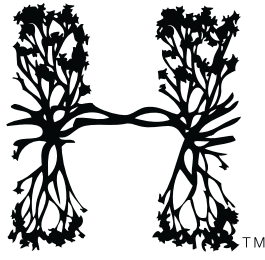
HYDE RESORT & RESIDENCES
 HOLLYWOOD FLORIDA



RESIDENCE 03 2 BEDROOMS 2 BATHS

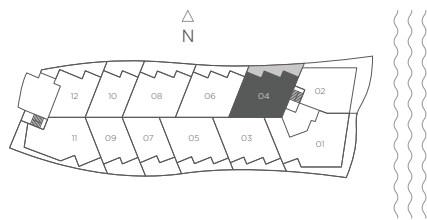
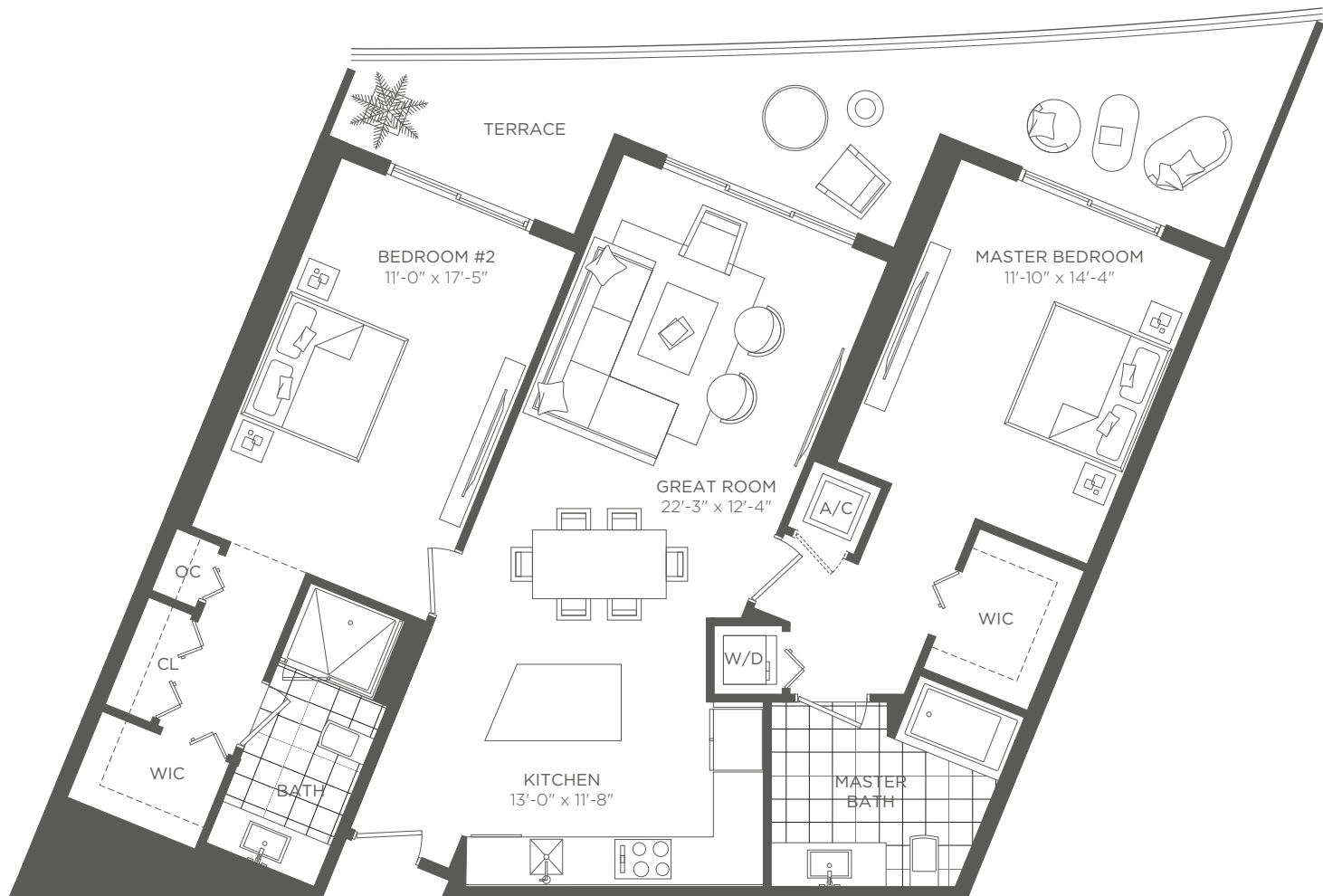
Interior 1,235 sq ft / 114.73 m² Terraces 232 sq ft / 21.55 m² Total 1,467 sq ft / 136.29 m²

Stated dimensions are measured to the exterior boundaries of the exterior walls and the centerline of interior demising walls and in fact vary from the dimensions that would be determined by using the description and definition of the "Unit" set forth in the Declaration which generally only includes the interior airspace between the perimeter walls (measuring from interior wall plane to interior wall plane) and excludes interior structural components. For your reference, the area of the Unit, determined in accordance with those defined Unit boundaries (from interior wall plane to interior wall plane), is 1,135 sq. ft. Note that measurements of rooms set forth on this floor plan are generally taken at the greatest points of each given room (as if the room were a perfect rectangle), without regard for any cutouts. Accordingly, the area of the actual room will typically be smaller than the product obtained by multiplying the stated length times width. All dimensions are approximate and may vary with actual construction, and all floor plans and development plans are subject to change.



HYDE RESORT & RESIDENCES
HOLLYWOOD FLORIDA

Patricio Javier Orloff
Cervera Real Estate
www.HydeBeachUSA.com

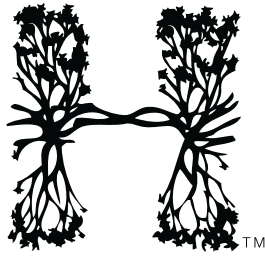


RESIDENCE 04 2 BEDROOMS 2 BATHS

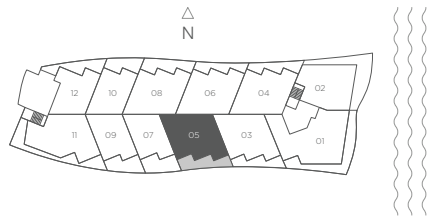
Interior 1,248 sq ft / 115.94 m² Terraces 277 sq ft / 25.73 m² Total 1,525 sq ft / 141.67 m²

Stated dimensions are measured to the exterior boundaries of the exterior walls and the centerline of interior demising walls and in fact vary from the dimensions that would be determined by using the description and definition of the "Unit" set forth in the Declaration which generally only includes the interior airspace between the perimeter walls (measuring from interior wall plane to interior wall plane) and excludes interior structural components. For your reference, the area of the Unit, determined in accordance with those defined Unit boundaries (from interior wall plane to interior wall plane), is 1,135 sq. ft. Note that measurements of rooms set forth on this floor plan are generally taken at the greatest points of each given room (as if the room were a perfect rectangle), without regard for any cutouts. Accordingly, the area of the actual room will typically be smaller than the product obtained by multiplying the stated length times width. All dimensions are approximate and may vary with actual construction, and all floor plans and development plans are subject to change.

Patricio Javier Orloff
 Cervera Real Estate
 www.HydeBeachUSA.com



HYDE RESORT & RESIDENCES
 HOLLYWOOD FLORIDA

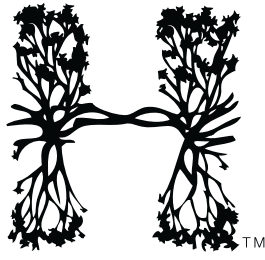


RESIDENCE 05 2 BEDROOMS 2 BATHS

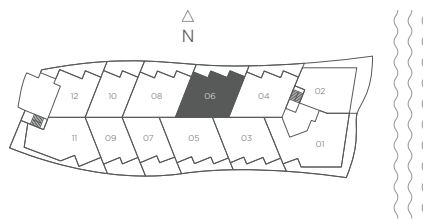
Interior 1,265 sq ft / 117.52 m² Terraces 288 sq ft / 26.76 m² Total 1,553 sq ft / 144.28 m²

Stated dimensions are measured to the exterior boundaries of the exterior walls and the centerline of interior demising walls and in fact vary from the dimensions that would be determined by using the description and definition of the "Unit" set forth in the Declaration which generally only includes the interior airspace between the perimeter walls (measuring from interior wall plane to interior wall plane) and excludes interior structural components. For your reference, the area of the Unit, determined in accordance with those defined Unit boundaries (from interior wall plane to interior wall plane), is 1,135 sq. ft. Note that measurements of rooms set forth on this floor plan are generally taken at the greatest points of each given room (as if the room were a perfect rectangle), without regard for any cutouts. Accordingly, the area of the actual room will typically be smaller than the product obtained by multiplying the stated length times width. All dimensions are approximate and may vary with actual construction, and all floor plans and development plans are subject to change.

Patricio Javier Orloff
 Cervera Real Estate
 www.HydeBeachUSA.com



HYDE RESORT & RESIDENCES
 HOLLYWOOD FLORIDA

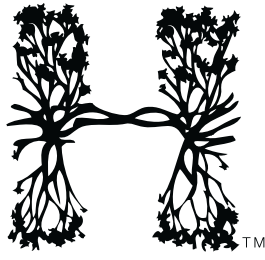


RESIDENCE 06 2 BEDROOMS 2 BATHS

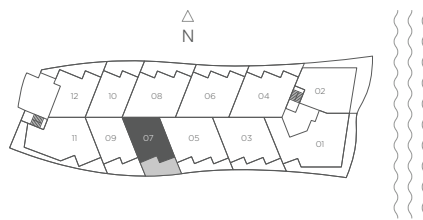
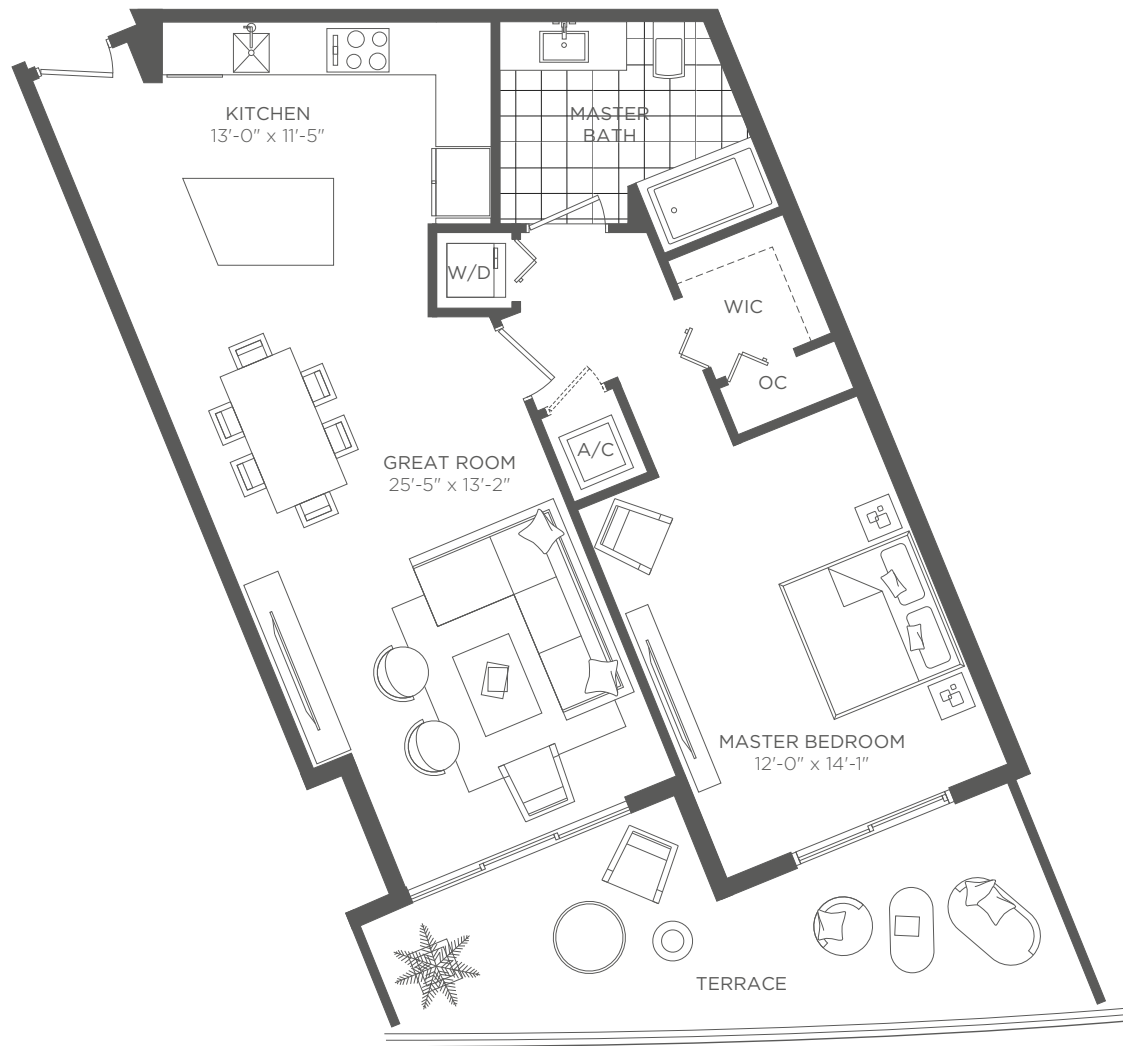
Interior 1,235 sq ft / 114.74 m² Terraces 265 sq ft / 24.62 m² Total 1,500 sq ft / 139.35 m²

Stated dimensions are measured to the exterior boundaries of the exterior walls and the centerline of interior demising walls and in fact vary from the dimensions that would be determined by using the description and definition of the "Unit" set forth in the Declaration which generally only includes the interior airspace between the perimeter walls (measuring from interior wall plane to interior wall plane) and excludes interior structural components. For your reference, the area of the Unit, determined in accordance with those defined Unit boundaries (from interior wall plane to interior wall plane), is 1,135 sq. ft. Note that measurements of rooms set forth on this floor plan are generally taken at the greatest points of each given room (as if the room were a perfect rectangle), without regard for any cutouts. Accordingly, the area of the actual room will typically be smaller than the product obtained by multiplying the stated length times width. All dimensions are approximate and may vary with actual construction, and all floor plans and development plans are subject to change.

Patricio Javier Orloff
 Cervera Real Estate
 www.HydeBeachUSA.com



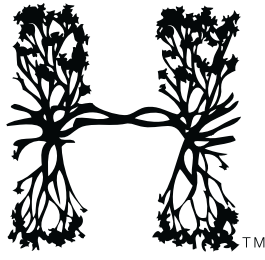
HYDE RESORT & RESIDENCES
 HOLLYWOOD FLORIDA



RESIDENCE 07 1 BEDROOM 1 BATH

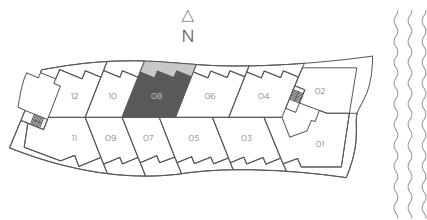
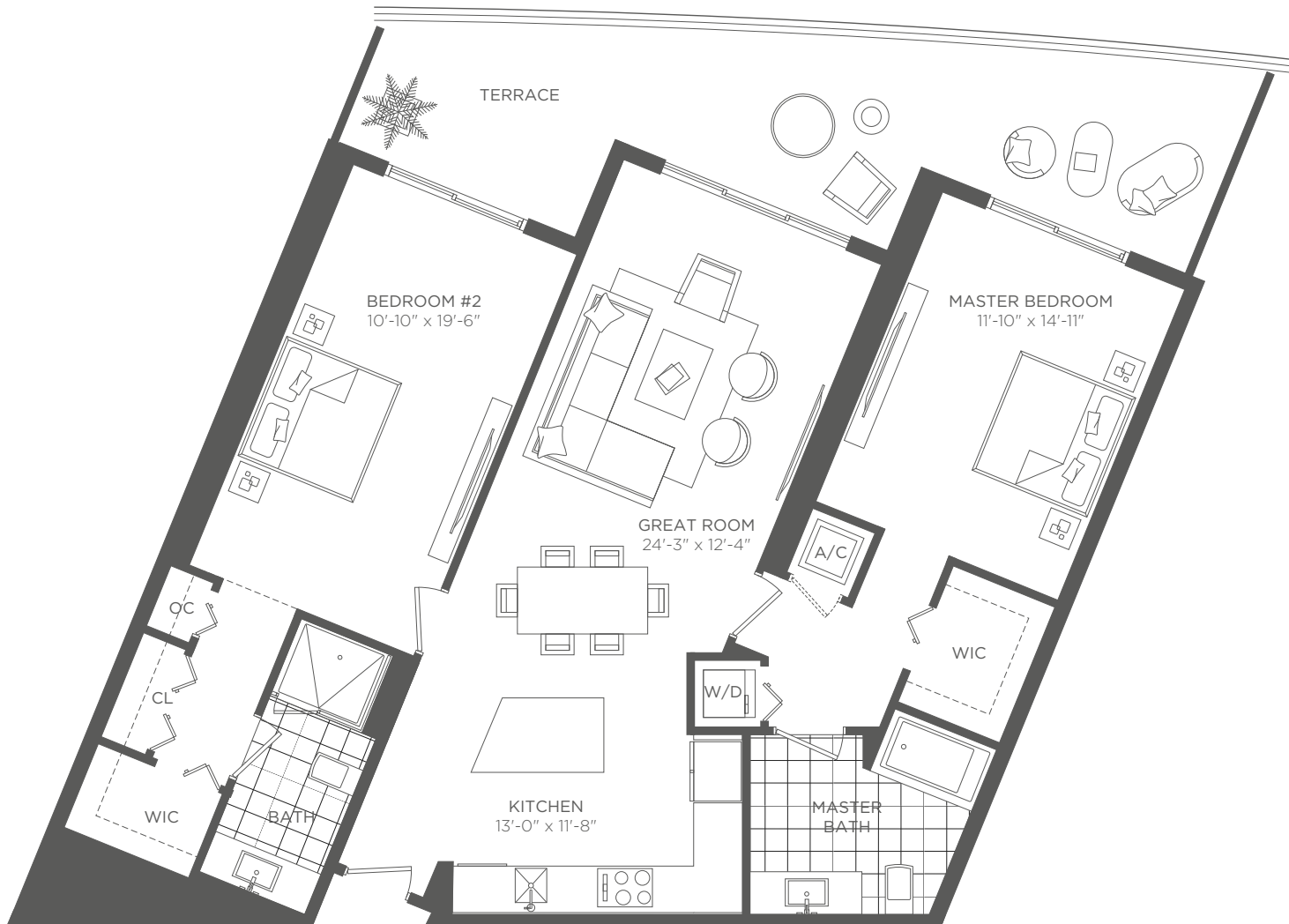
Interior 914 sq ft / 84.91 m² Terraces 213 sq ft / 19.78 m² Total 1,127 sq ft / 104.70 m²

Stated dimensions are measured to the exterior boundaries of the exterior walls and the centerline of interior demising walls and in fact vary from the dimensions that would be determined by using the description and definition of the "Unit" set forth in the Declaration which generally only includes the interior airspace between the perimeter walls (measuring from interior wall plane to interior wall plane) and excludes interior structural components. For your reference, the area of the Unit, determined in accordance with those defined Unit boundaries (from interior wall plane to interior wall plane), is 1,135 sq. ft. Note that measurements of rooms set forth on this floor plan are generally taken at the greatest points of each given room (as if the room were a perfect rectangle), without regard for any cutouts. Accordingly, the area of the actual room will typically be smaller than the product obtained by multiplying the stated length times width. All dimensions are approximate and may vary with actual construction, and all floor plans and development plans are subject to change.



HYDE RESORT & RESIDENCES
HOLLYWOOD FLORIDA

Patricio Javier Orloff
Cervera Real Estate
www.HydeBeachUSA.com

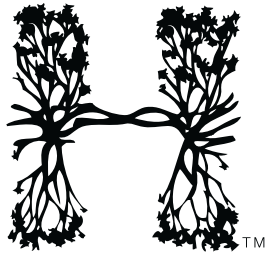


RESIDENCE 08 2 BEDROOMS 2 BATHS

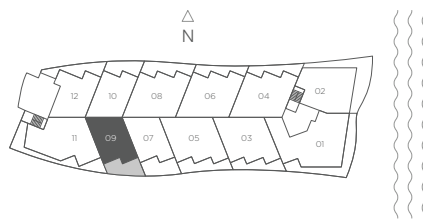
Interior 1,275 sq ft / 118.45 m² Terraces 315 sq ft / 29.26 m² Total 1,590 sq ft / 147.71 m²

Stated dimensions are measured to the exterior boundaries of the exterior walls and the centerline of interior demising walls and in fact vary from the dimensions that would be determined by using the description and definition of the "Unit" set forth in the Declaration which generally only includes the interior airspace between the perimeter walls (measuring from interior wall plane to interior wall plane) and excludes interior structural components. For your reference, the area of the Unit, determined in accordance with those defined Unit boundaries (from interior wall plane to interior wall plane), is 1,135 sq. ft. Note that measurements of rooms set forth on this floor plan are generally taken at the greatest points of each given room (as if the room were a perfect rectangle), without regard for any cutouts. Accordingly, the area of the actual room will typically be smaller than the product obtained by multiplying the stated length times width. All dimensions are approximate and may vary with actual construction, and all floor plans and development plans are subject to change.

Patricio Javier Orloff
 Cervera Real Estate
 www.HydeBeachUSA.com



HYDE RESORT & RESIDENCES
 HOLLYWOOD FLORIDA

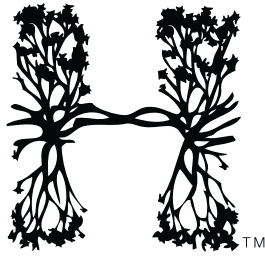


RESIDENCE 09 1 BEDROOM 1 BATH

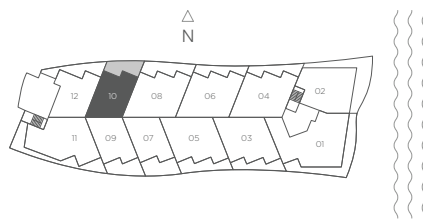
Interior 915 sq ft / 85.00 m² Terraces 208 sq ft / 19.32 m² Total 1,123 sq ft / 104.33 m²

Stated dimensions are measured to the exterior boundaries of the exterior walls and the centerline of interior demising walls and in fact vary from the dimensions that would be determined by using the description and definition of the "Unit" set forth in the Declaration which generally only includes the interior airspace between the perimeter walls (measuring from interior wall plane to interior wall plane) and excludes interior structural components. For your reference, the area of the Unit, determined in accordance with those defined Unit boundaries (from interior wall plane to interior wall plane), is 1,296 sq. ft. Note that measurements of rooms set forth on this floor plan are generally taken at the greatest points of each given room (as if the room were a perfect rectangle), without regard for any cutouts. Accordingly, the area of the actual room will typically be smaller than the product obtained by multiplying the stated length times width. All dimensions are approximate and may vary with actual construction, and all floor plans and development plans are subject to change.

Patricio Javier Orloff
 Cervera Real Estate
 www.HydeBeachUSA.com



HYDE RESORT & RESIDENCES
 HOLLYWOOD FLORIDA

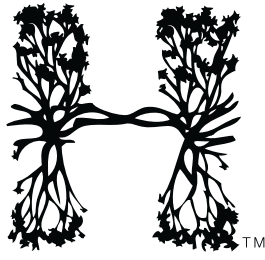


RESIDENCE 10 1 BEDROOM 1 BATH

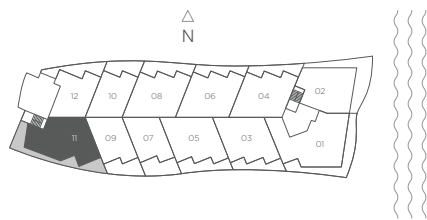
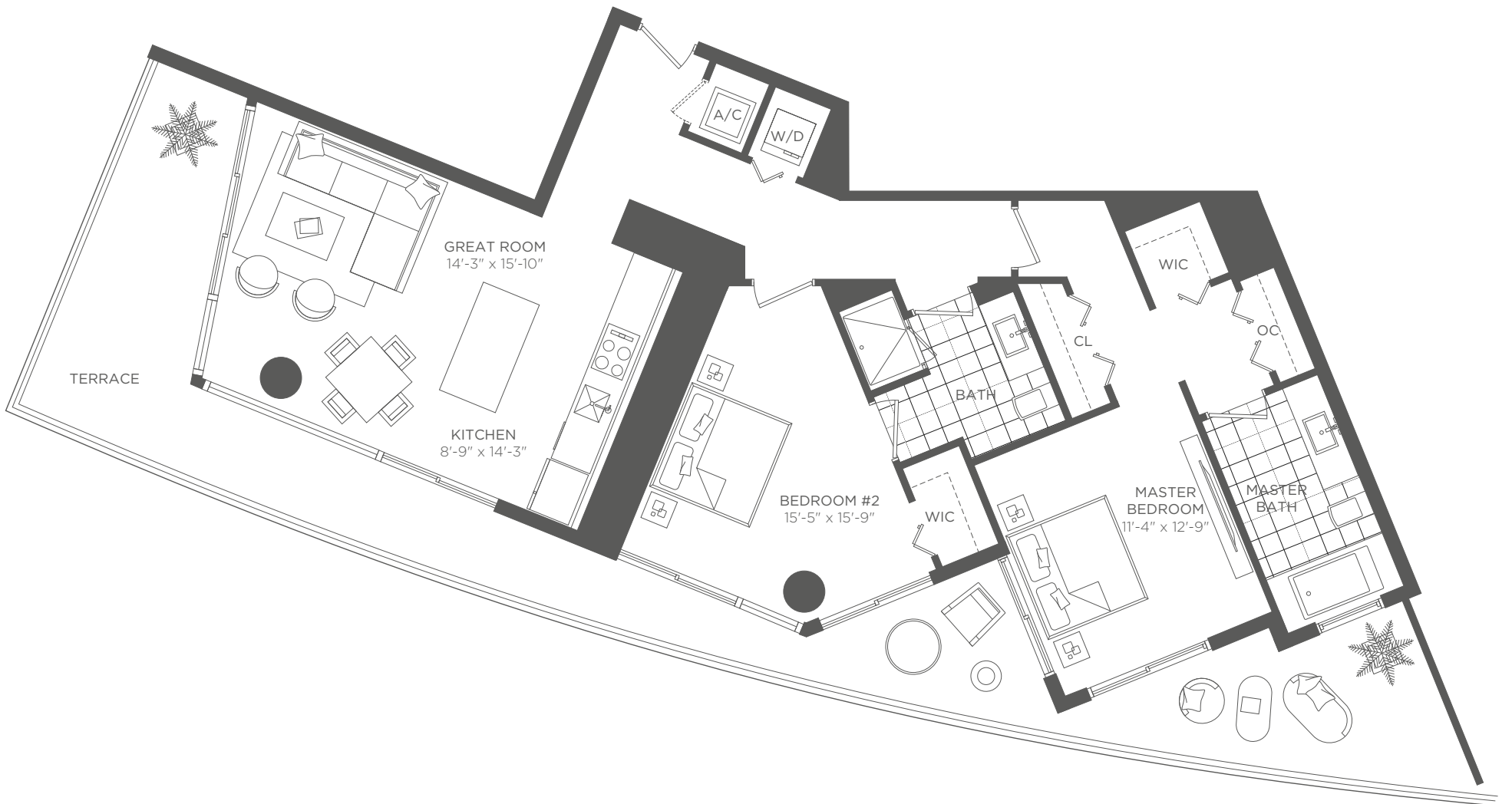
Interior 928 sq ft / 86.21 m² Terraces 210 sq ft / 19.50 m² Total 1,138 sq ft / 105.72 m²

Stated dimensions are measured to the exterior boundaries of the exterior walls and the centerline of interior demising walls and in fact vary from the dimensions that would be determined by using the description and definition of the "Unit" set forth in the Declaration which generally only includes the interior airspace between the perimeter walls (measuring from interior wall plane to interior wall plane) and excludes interior structural components. For your reference, the area of the Unit, determined in accordance with those defined Unit boundaries (from interior wall plane to interior wall plane), is 787 sq. ft. Note that measurements of rooms set forth on this floor plan are generally taken at the greatest points of each given room (as if the room were a perfect rectangle), without regard for any cutouts. Accordingly, the area of the actual room will typically be smaller than the product obtained by multiplying the stated length times width. All dimensions are approximate and may vary with actual construction, and all floor plans and development plans are subject to change.

Patricio Javier Orloff
 Cervera Real Estate
 www.HydeBeachUSA.com



HYDE RESORT & RESIDENCES
 HOLLYWOOD FLORIDA

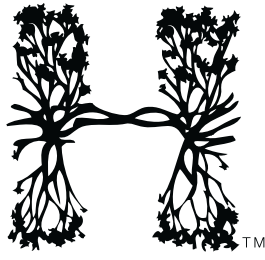


RESIDENCE 11 2 BEDROOMS 2 BATHS

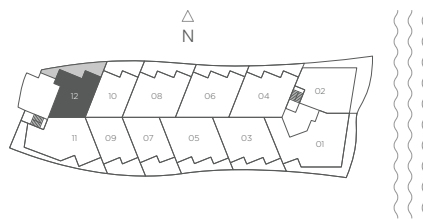
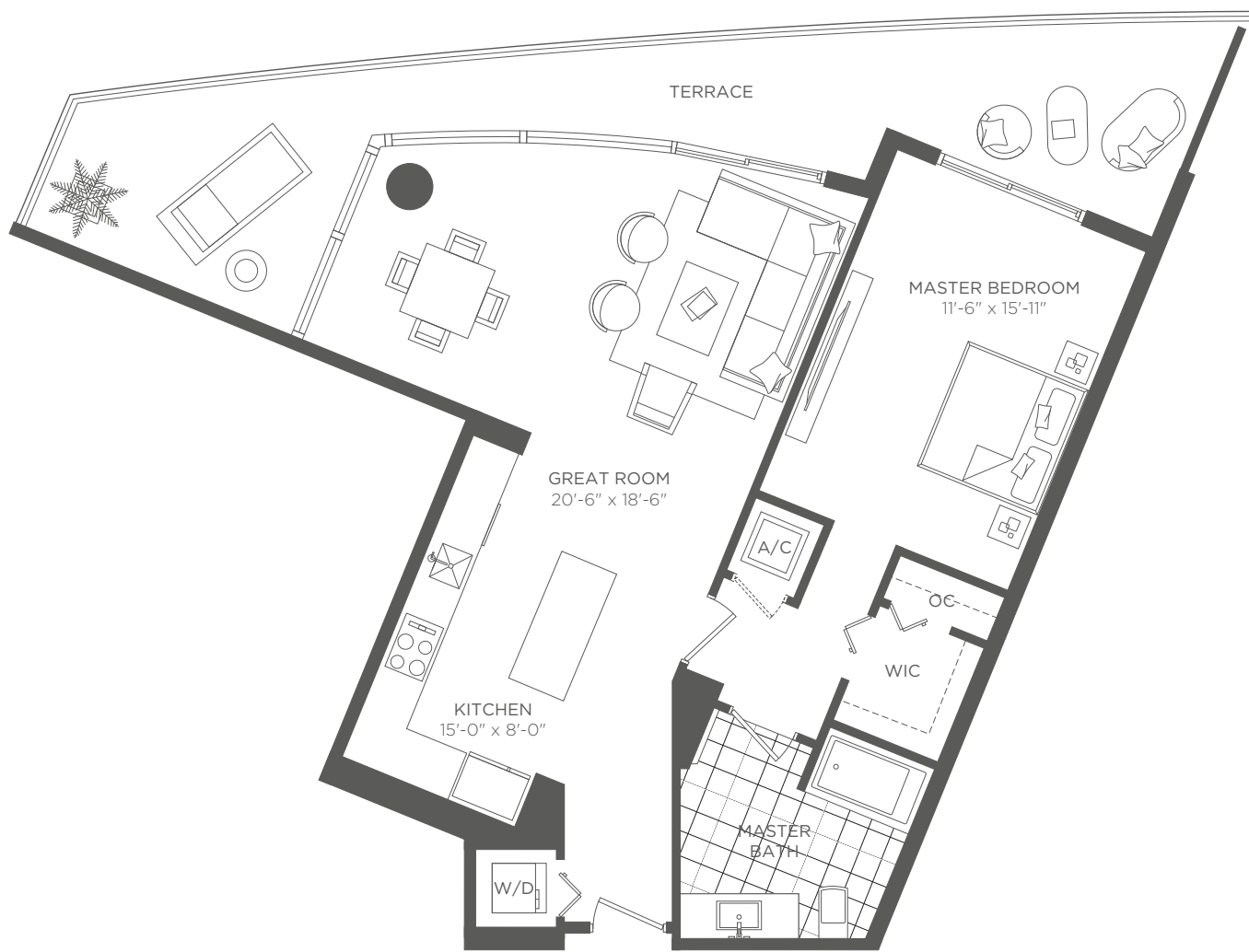
Interior 1,273 sq ft / 118.27 m² Terraces 510 sq ft / 47.38 m² Total 1,783 sq ft / 165.65 m²

Stated dimensions are measured to the exterior boundaries of the exterior walls and the centerline of interior demising walls and in fact vary from the dimensions that would be determined by using the description and definition of the "Unit" set forth in the Declaration which generally only includes the interior airspace between the perimeter walls (measuring from interior wall plane to interior wall plane) and excludes interior structural components. For your reference, the area of the Unit, determined in accordance with those defined Unit boundaries (from interior wall plane to interior wall plane), is 1,296 sq. ft. Note that measurements of rooms set forth on this floor plan are generally taken at the greatest points of each given room (as if the room were a perfect rectangle), without regard for any cutouts. Accordingly, the area of the actual room will typically be smaller than the product obtained by multiplying the stated length times width. All dimensions are approximate and may vary with actual construction, and all floor plans and development plans are subject to change.

Patricio Javier Orloff
 Cervera Real Estate
 www.HydeBeachUSA.com



HYDE RESORT & RESIDENCES
 HOLLYWOOD FLORIDA

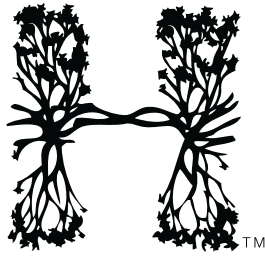


RESIDENCE 12 1 BEDROOM 1 BATH

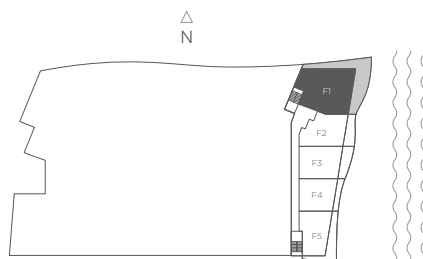
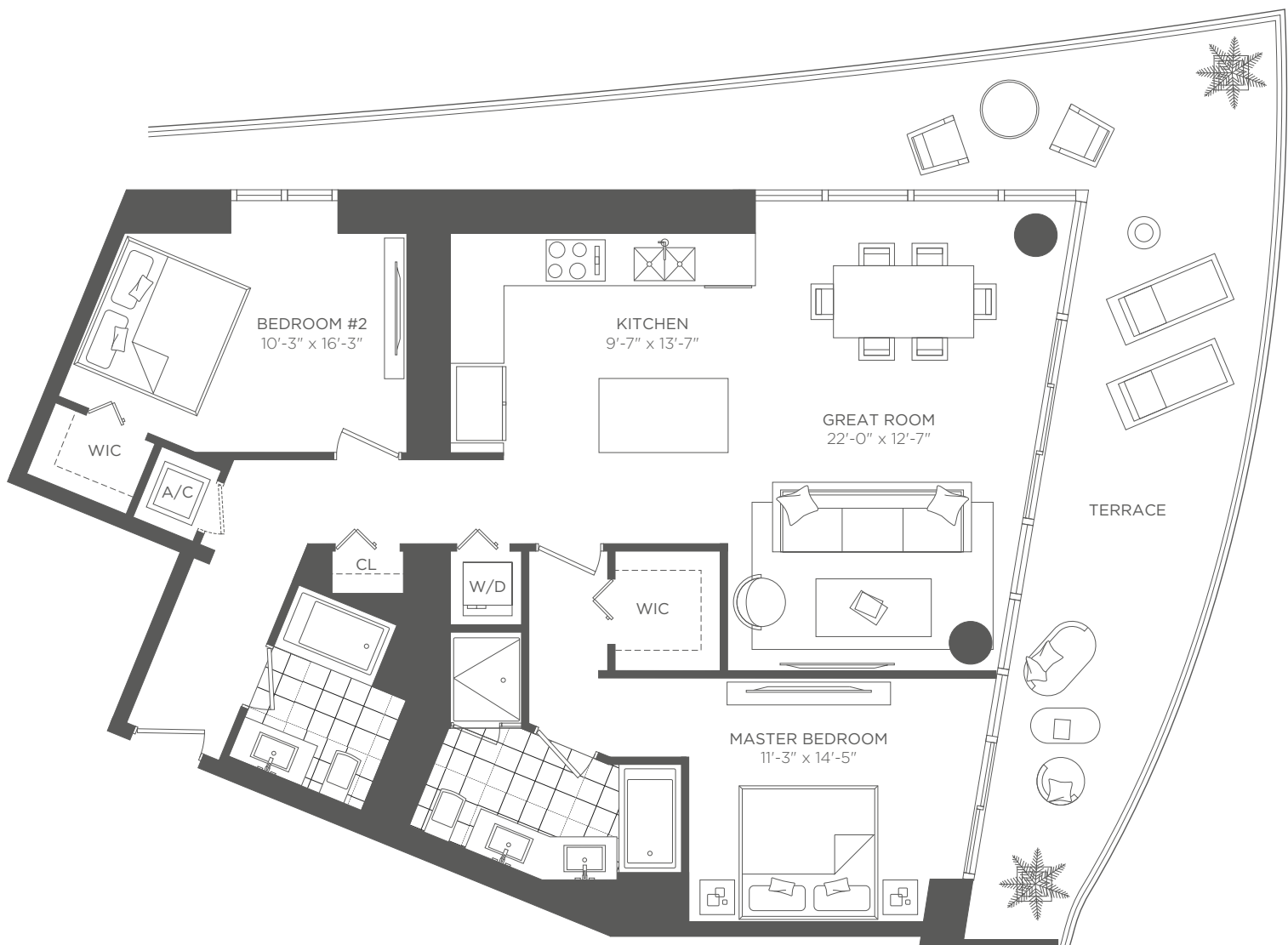
Interior 950 sq ft / 88.26 m² Terraces 340 sq ft / 31.59 m² Total 1,290 sq ft / 119.84 m²

Stated dimensions are measured to the exterior boundaries of the exterior walls and the centerline of interior demising walls and in fact vary from the dimensions that would be determined by using the description and definition of the "Unit" set forth in the Declaration which generally only includes the interior airspace between the perimeter walls (measuring from interior wall plane to interior wall plane) and excludes interior structural components. For your reference, the area of the Unit, determined in accordance with those defined Unit boundaries (from interior wall plane to interior wall plane), is 1,296 sq. ft. Note that measurements of rooms set forth on this floor plan are generally taken at the greatest points of each given room (as if the room were a perfect rectangle), without regard for any cutouts. Accordingly, the area of the actual room will typically be smaller than the product obtained by multiplying the stated length times width. All dimensions are approximate and may vary with actual construction, and all floor plans and development plans are subject to change.

Patricio Javier Orloff
 Cervera Real Estate
 www.HydeBeachUSA.com



HYDE RESORT & RESIDENCES
 HOLLYWOOD FLORIDA

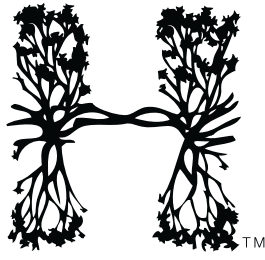


RESIDENCE F1 2 BEDROOMS 2 BATHS

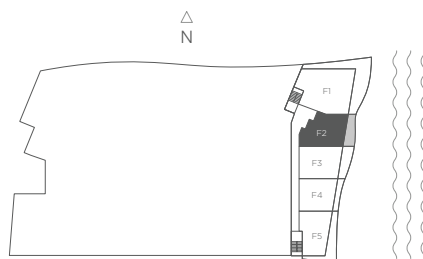
Interior 1,405 sq ft / 130.53 m² Terraces 598 sq ft / 55.56 m² Total 2,003 sq ft / 186.08 m²

Stated dimensions are measured to the exterior boundaries of the exterior walls and the centerline of interior demising walls and in fact vary from the dimensions that would be determined by using the description and definition of the "Unit" set forth in the Declaration which generally only includes the interior airspace between the perimeter walls (measuring from interior wall plane to interior wall plane) and excludes interior structural components. For your reference, the area of the Unit, determined in accordance with those defined Unit boundaries (from interior wall plane to interior wall plane), is 690 sq. ft. Note that measurements of rooms set forth on this floor plan are generally taken at the greatest points of each given room (as if the room were a perfect rectangle), without regard for any cutouts. Accordingly, the area of the actual room will typically be smaller than the product obtained by multiplying the stated length times width. All dimensions are approximate and may vary with actual construction, and all floor plans and development plans are subject to change.

Patricio Javier Orloff
 Cervera Real Estate
 www.HydeBeachUSA.com



HYDE RESORT & RESIDENCES
 HOLLYWOOD FLORIDA

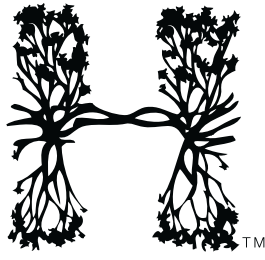


RESIDENCE F2 1 BEDROOM 1 BATH

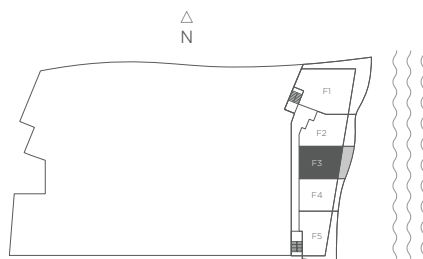
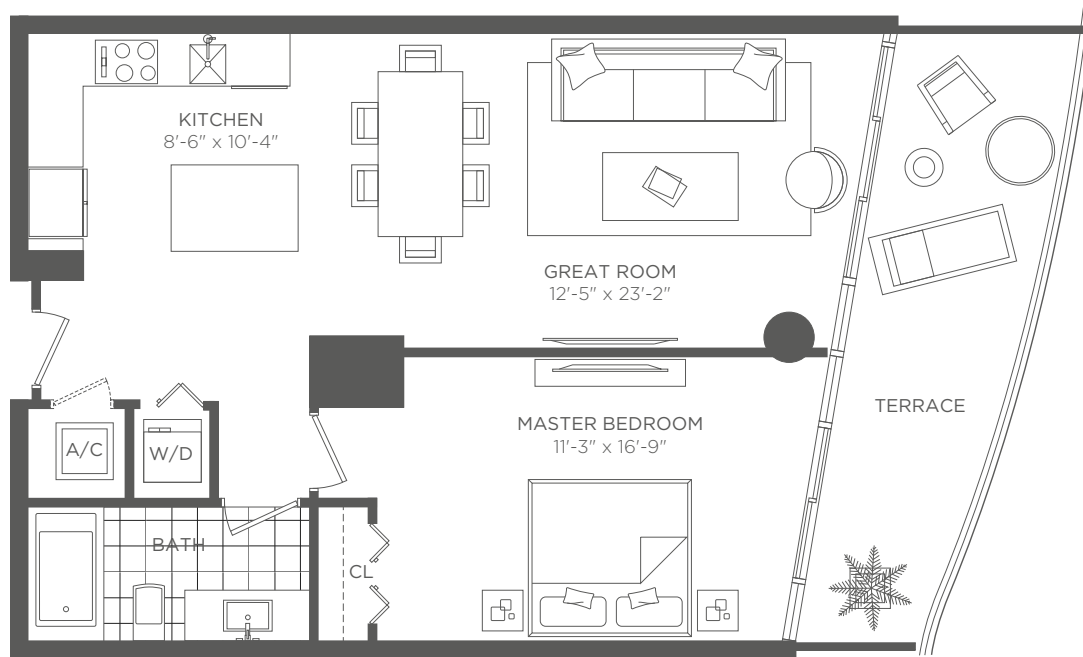
Interior 904 sq ft / 83.98 m² Terraces 175 sq ft / 16.26 m² Total 1,079 sq ft / 100.24 m²

Stated dimensions are measured to the exterior boundaries of the exterior walls and the centerline of interior demising walls and in fact vary from the dimensions that would be determined by using the description and definition of the "Unit" set forth in the Declaration which generally only includes the interior airspace between the perimeter walls (measuring from interior wall plane to interior wall plane) and excludes interior structural components. For your reference, the area of the Unit, determined in accordance with those defined Unit boundaries (from interior wall plane to interior wall plane), is 668 sq. ft. Note that measurements of rooms set forth on this floor plan are generally taken at the greatest points of each given room (as if the room were a perfect rectangle), without regard for any cutouts. Accordingly, the area of the actual room will typically be smaller than the product obtained by multiplying the stated length times width. All dimensions are approximate and may vary with actual construction, and all floor plans and development plans are subject to change.

Patricio Javier Orloff
 Cervera Real Estate
 www.HydeBeachUSA.com



HYDE RESORT & RESIDENCES
 HOLLYWOOD FLORIDA

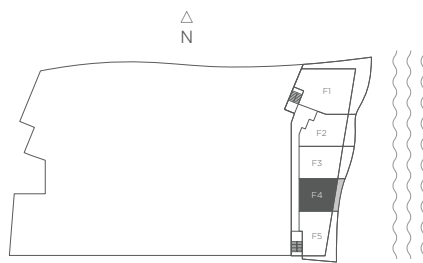
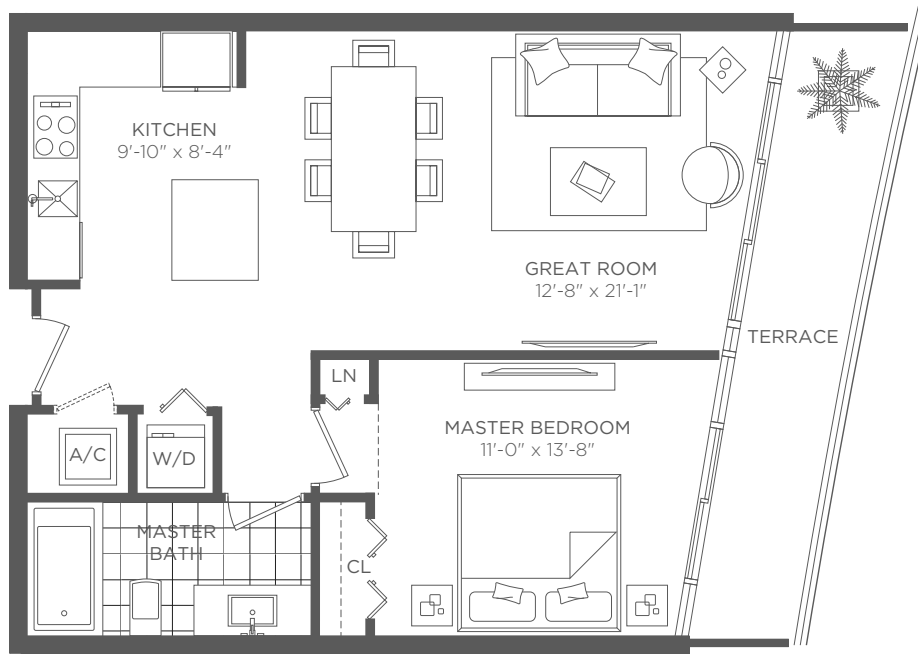
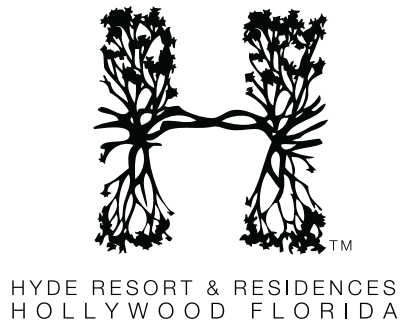


RESIDENCE F3 1 BEDROOM 1 BATH

Interior 800 sq ft / 74.32 m² Terraces 175 sq ft / 16.26 m² Total 975 sq ft / 90.58 m²

Stated dimensions are measured to the exterior boundaries of the exterior walls and the centerline of interior demising walls and in fact vary from the dimensions that would be determined by using the description and definition of the "Unit" set forth in the Declaration which generally only includes the interior airspace between the perimeter walls (measuring from interior wall plane to interior wall plane) and excludes interior structural components. For your reference, the area of the Unit, determined in accordance with those defined Unit boundaries (from interior wall plane to interior wall plane), is 771 sq. ft. Note that measurements of rooms set forth on this floor plan are generally taken at the greatest points of each given room (as if the room were a perfect rectangle), without regard for any cutouts. Accordingly, the area of the actual room will typically be smaller than the product obtained by multiplying the stated length times width. All dimensions are approximate and may vary with actual construction, and all floor plans and development plans are subject to change.

Patricio Javier Orloff
 Cervera Real Estate
 www.HydeBeachUSA.com

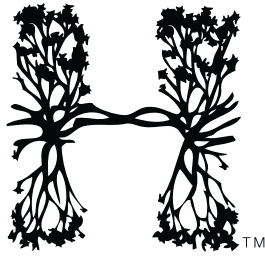


RESIDENCE F4 1 BEDROOM 1 BATH

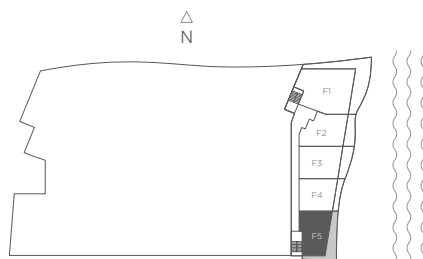
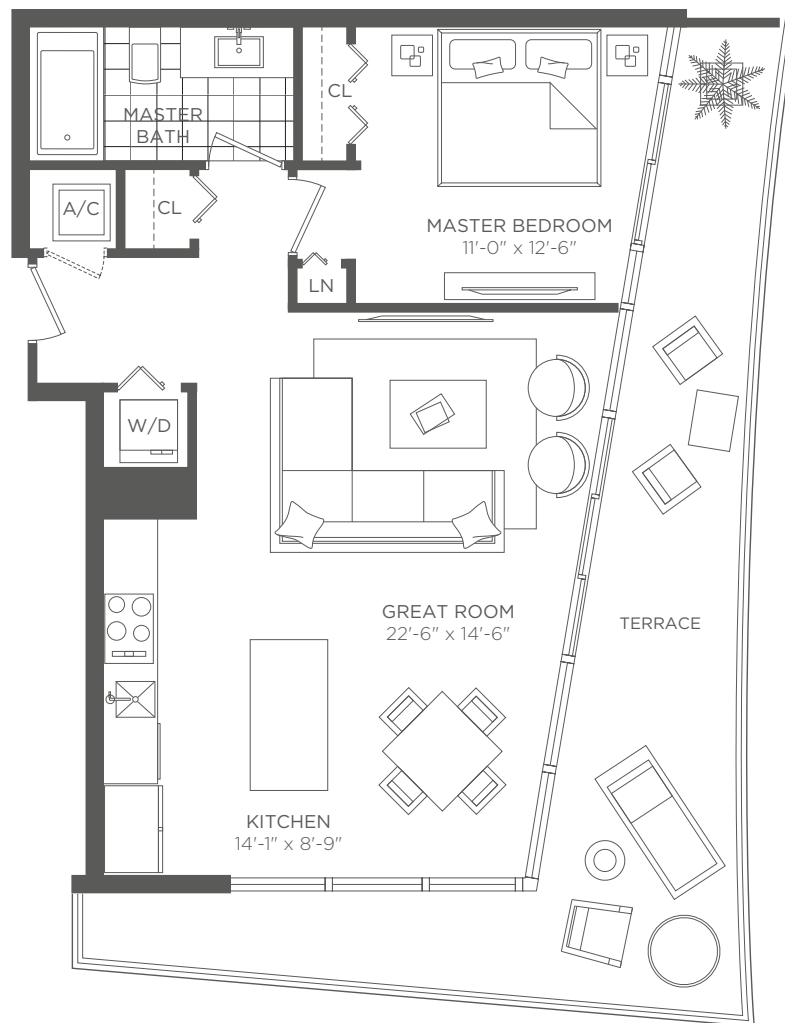
Interior 705 sq ft / 65.49 m² Terraces 121 sq ft / 11.24 m² Total 826 sq ft / 76.74 m²

Stated dimensions are measured to the exterior boundaries of the exterior walls and the centerline of interior demising walls and in fact vary from the dimensions that would be determined by using the description and definition of the "Unit" set forth in the Declaration which generally only includes the interior airspace between the perimeter walls (measuring from interior wall plane to interior wall plane) and excludes interior structural components. For your reference, the area of the Unit, determined in accordance with those defined Unit boundaries (from interior wall plane to interior wall plane), is 803 sq. ft. Note that measurements of rooms set forth on this floor plan are generally taken at the greatest points of each given room (as if the room were a perfect rectangle), without regard for any cutouts. Accordingly, the area of the actual room will typically be smaller than the product obtained by multiplying the stated length times width. All dimensions are approximate and may vary with actual construction, and all floor plans and development plans are subject to change.

Patricio Javier Orloff, P.A.
 Cervera Real Estate
 www.HydeBeachUSA.com



HYDE RESORT & RESIDENCES
 HOLLYWOOD FLORIDA



RESIDENCE F5 1 BEDROOM 1 BATH

Interior 760 sq ft / 70.61 m² Terraces 342 sq ft / 31.77 m² Total 1,102 sq ft / 102.38 m²

Stated dimensions are measured to the exterior boundaries of the exterior walls and the centerline of interior demising walls and in fact vary from the dimensions that would be determined by using the description and definition of the "Unit" set forth in the Declaration which generally only includes the interior airspace between the perimeter walls (measuring from interior wall plane to interior wall plane) and excludes interior structural components. For your reference, the area of the Unit, determined in accordance with those defined Unit boundaries (from interior wall plane to interior wall plane), is 1,296 sq. ft. Note that measurements of rooms set forth on this floor plan are generally taken at the greatest points of each given room (as if the room were a perfect rectangle), without regard for any cutouts. Accordingly, the area of the actual room will typically be smaller than the product obtained by multiplying the stated length times width. All dimensions are approximate and may vary with actual construction, and all floor plans and development plans are subject to change.