

BRICKELLTEN

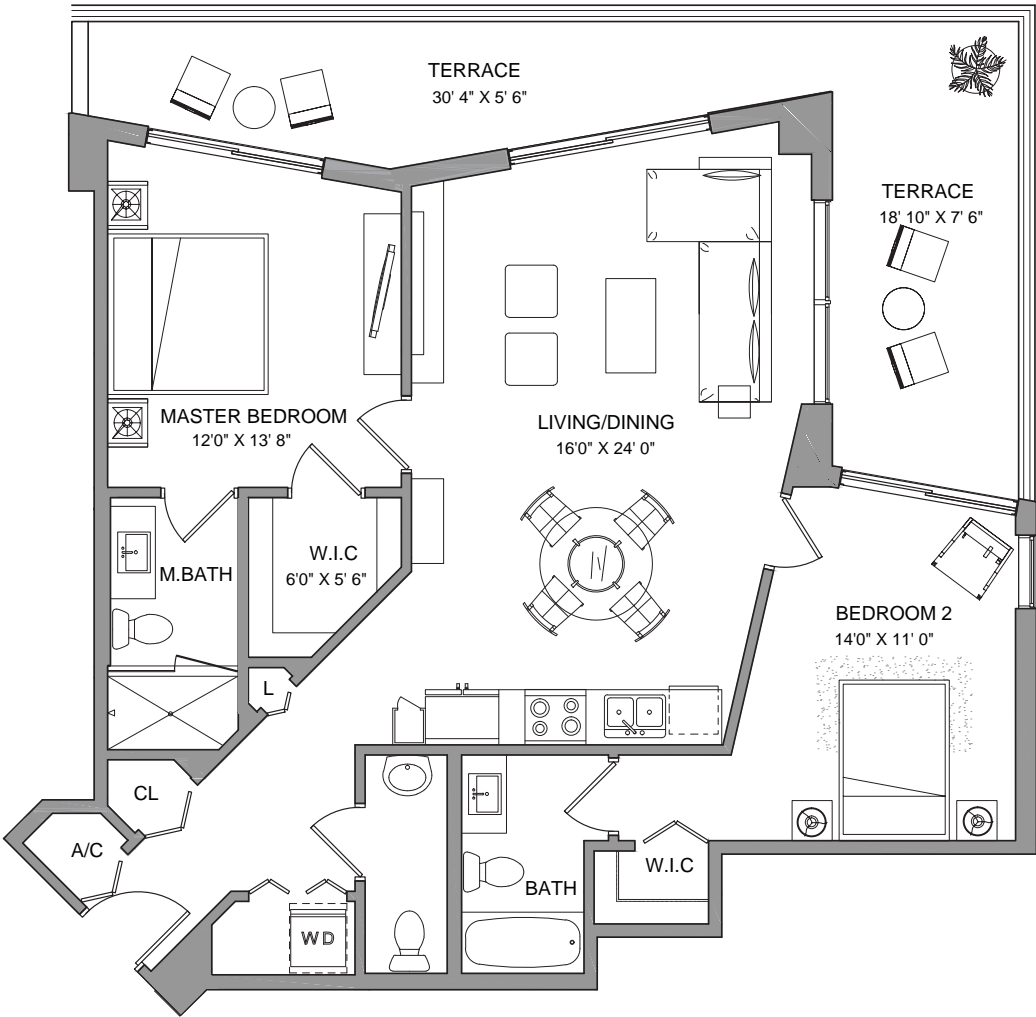
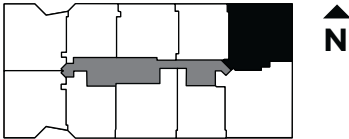
Patricio Javier Orloff, P.A.
 Cervera Real Estate
 brickelltencondo.com

RESIDENCE FOUR


2 BEDROOMS / 2 1/2 BATH

INTERIOR.....	1,124 sq ft	105 m ²
TERRACE.....	328 sq ft	31 m ²

TOTAL **1,452 sq ft** **136 m²**



SALES AND MARKETING BY
ONEWORLD
 PROPERTIES

 These drawings are conceptual only and are for the convenience of reference. They should not be relied upon as representations, express or implied, of the final detail of the residences. Units shown are examples of unit types and may not depict actual units. Stated square footages are ranges for a particular unit type and are measured to the exterior boundaries of the exterior walls and the centerline of interior demising walls and in fact vary from the area that would be determined by using the description and definition of the "Unit" set forth in the Declaration (which generally only includes the interior airspace between the perimeter walls and excludes interior structural components).

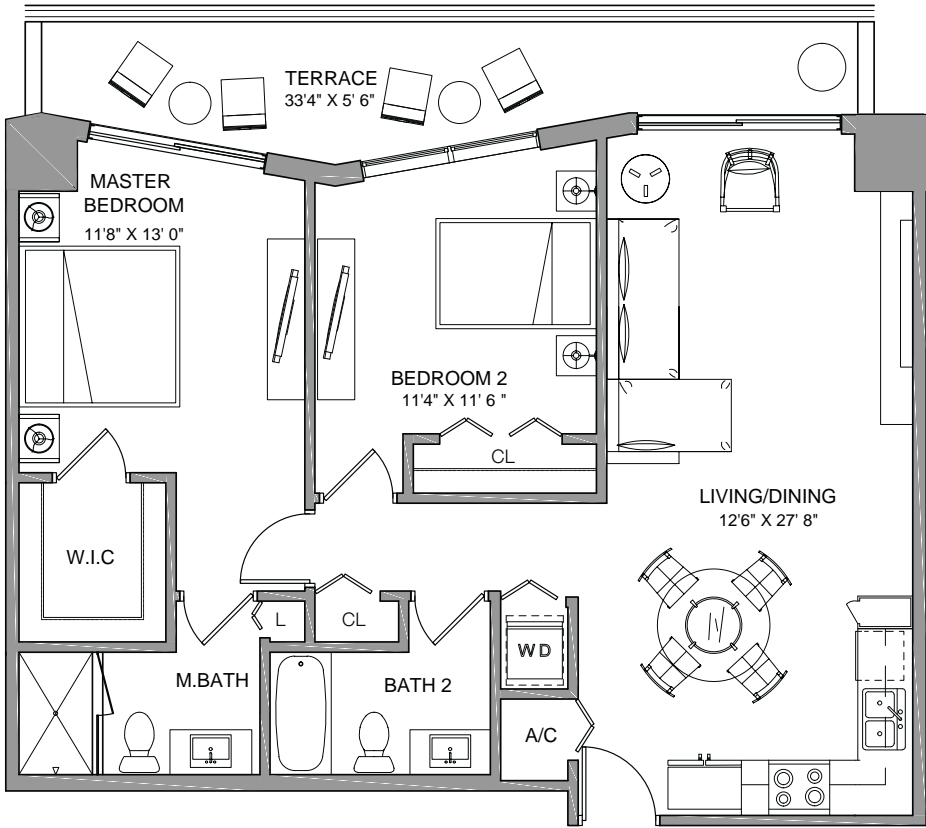
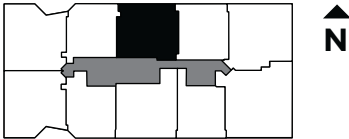
BRICKELLTEN

Patricio Javier Orloff, P.A.
 Cervera Real Estate
 brickelltencondo.com


RESIDENCE SIX 2 BEDROOMS / 2 BATH

INTERIOR..... 1,009 sq ft 94 m²
 TERRACE..... 177 sq ft 16 m²

TOTAL 1,186 sq ft 110 m²



SALES AND MARKETING BY
ONEWORLD
 PROPERTIES

 These drawings are conceptual only and are for the convenience of reference. They should not be relied upon as representations, express or implied, of the final detail of the residences. Units shown are examples of unit types and may not depict actual units. Stated square footages are ranges for a particular unit type and are measured to the exterior boundaries of the exterior walls and the centerline of interior demising walls and in fact vary from the area that would be determined by using the description and definition of the "Unit" set forth in the Declaration (which generally only includes the interior airspace between the perimeter walls and excludes interior structural components).

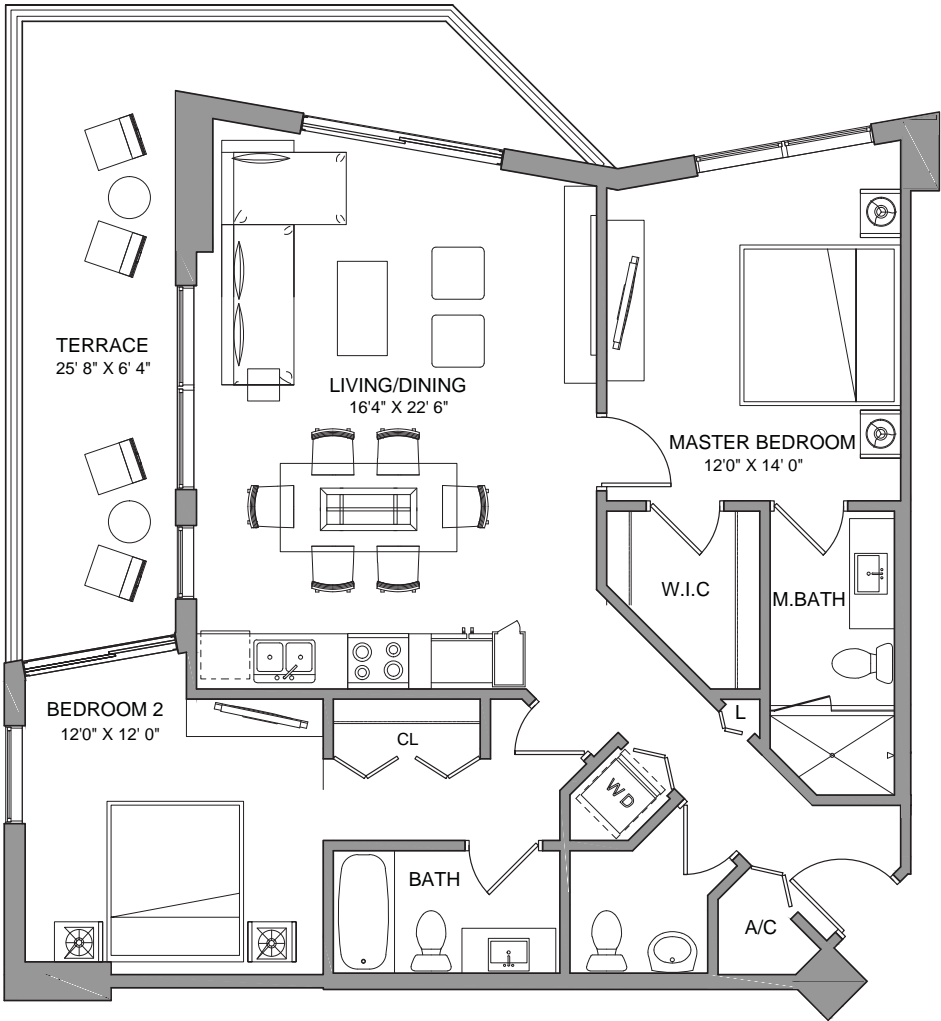
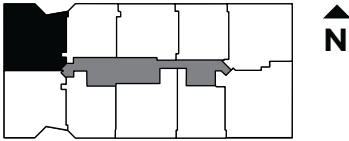
BRICKELLTEN

Patricio Javier Orloff, P.A.
 Cervera Real Estate
 brickelltencondo.com


RESIDENCE EIGHT

2 BEDROOMS / 2 1/2 BATH

INTERIOR.....	1,111 sq ft	103 m ²
TERRACE.....	254 sq ft	24 m ²
TOTAL	1,365 sq ft	127 m²



SALES AND MARKETING BY
ONEWORLD
 PROPERTIES

 These drawings are conceptual only and are for the convenience of reference. They should not be relied upon as representations, express or implied, of the final detail of the residences. Units shown are examples of unit types and may not depict actual units. Stated square footages are ranges for a particular unit type and are measured to the exterior boundaries of the exterior walls and the centerline of interior demising walls and in fact vary from the area that would be determined by using the description and definition of the "Unit" set forth in the Declaration (which generally only includes the interior airspace between the perimeter walls and excludes interior structural components).

BRICKELLTEN

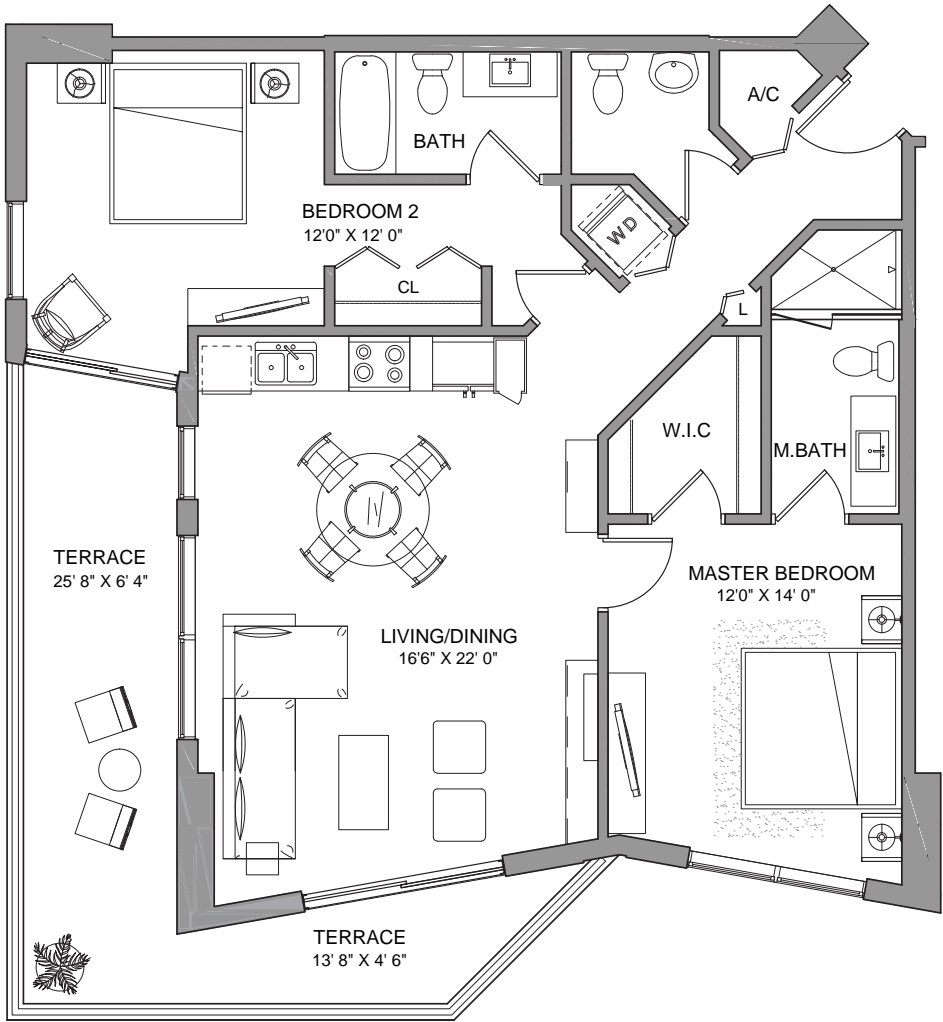
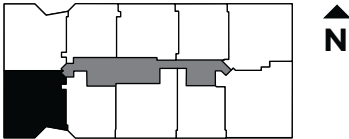
Patricio Javier Orloff, P.A.
 Cervera Real Estate
 brickelltencondo.com

RESIDENCE NINE


2 BEDROOMS / 2 1/2 BATH

INTERIOR..... 1,116 sq ft 104 m²
 TERRACE..... 254 sq ft 24 m²

TOTAL 1,370 sq ft 128 m²



SALES AND MARKETING BY
ONEWORLD
 PROPERTIES

 These drawings are conceptual only and are for the convenience of reference. They should not be relied upon as representations, express or implied, of the final detail of the residences. Units shown are examples of unit types and may not depict actual units. Stated square footages are ranges for a particular unit type and are measured to the exterior boundaries of the exterior walls and the centerline of interior demising walls and in fact vary from the area that would be determined by using the description and definition of the "Unit" set forth in the Declaration (which generally only includes the interior airspace between the perimeter walls and excludes interior structural components).