

ARAPAHOE ARCHITECTS, P.C.

P.O. BOX 4780  
BRECKENRIDGE, CO 80424  
(970)453-8474  
FAX: 453-8475

© COPYRIGHT  
REUSE OR REPRODUCTION  
OF THIS DOCUMENT IS NOT  
PERMITTED WITHOUT  
WRITTEN PERMISSION OF  
ARAPAHOE ARCHITECTS, P.C.

ANTLER'S GULCH - TRACT A  
62 CR 188  
SUMMIT COUNTY, COLORADO

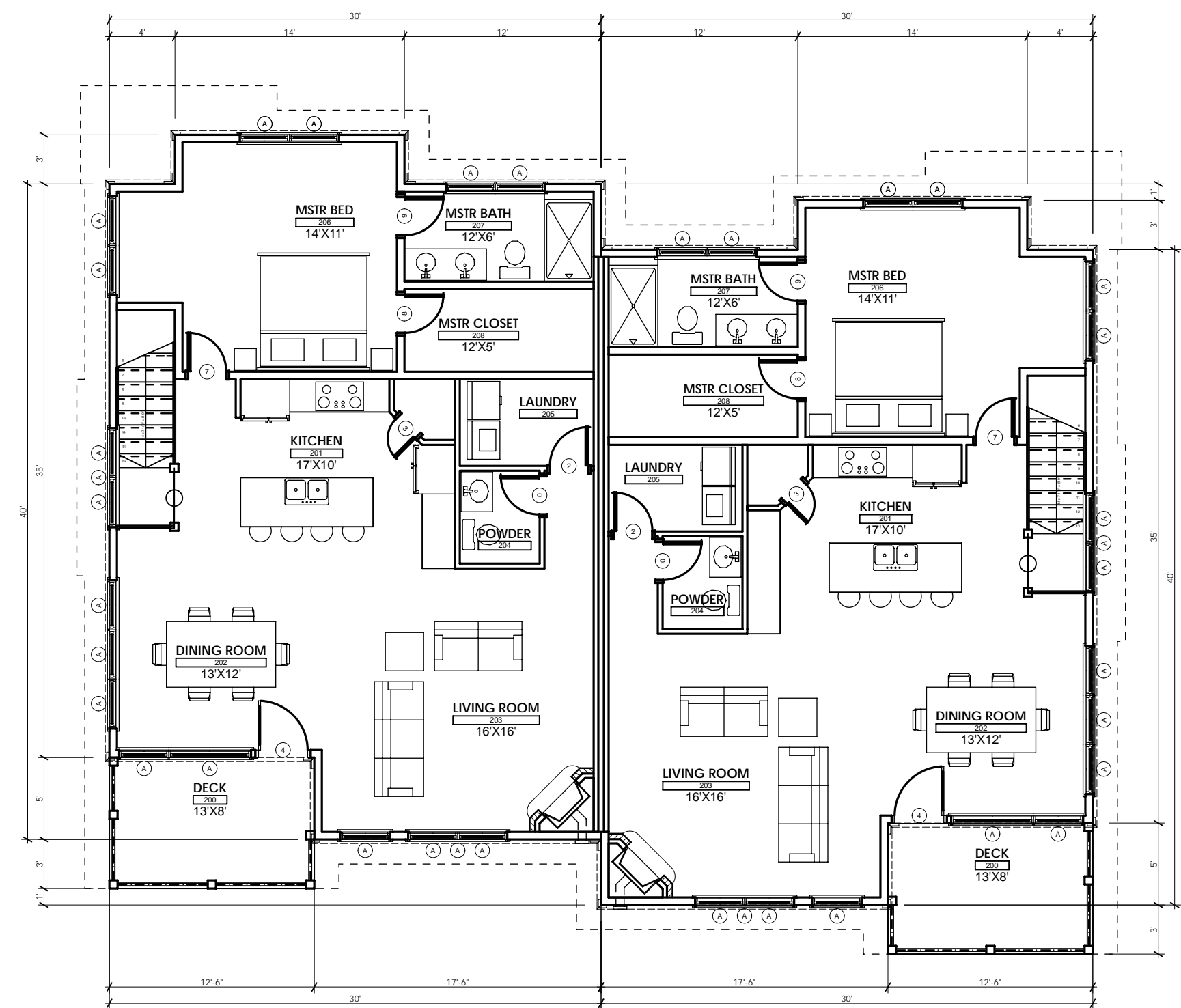
SITE PLAN PRESENTATION

JOB 1223  
DWN BY CM  
ISSUE 4/9/12 - SITE PLAN

SHEET

BUILDING AREA			
	FINISHED	UNFINISHED	TOTAL
MAIN FLOOR	1,141	-	1,141
LOWER FLOOR	636	485	1,121
<b>TOTAL :</b>	<b>1,777</b>	<b>485</b>	<b>2,262</b>
NOTES:	UNFINISHED INCLUDES GARAGE, MECH		

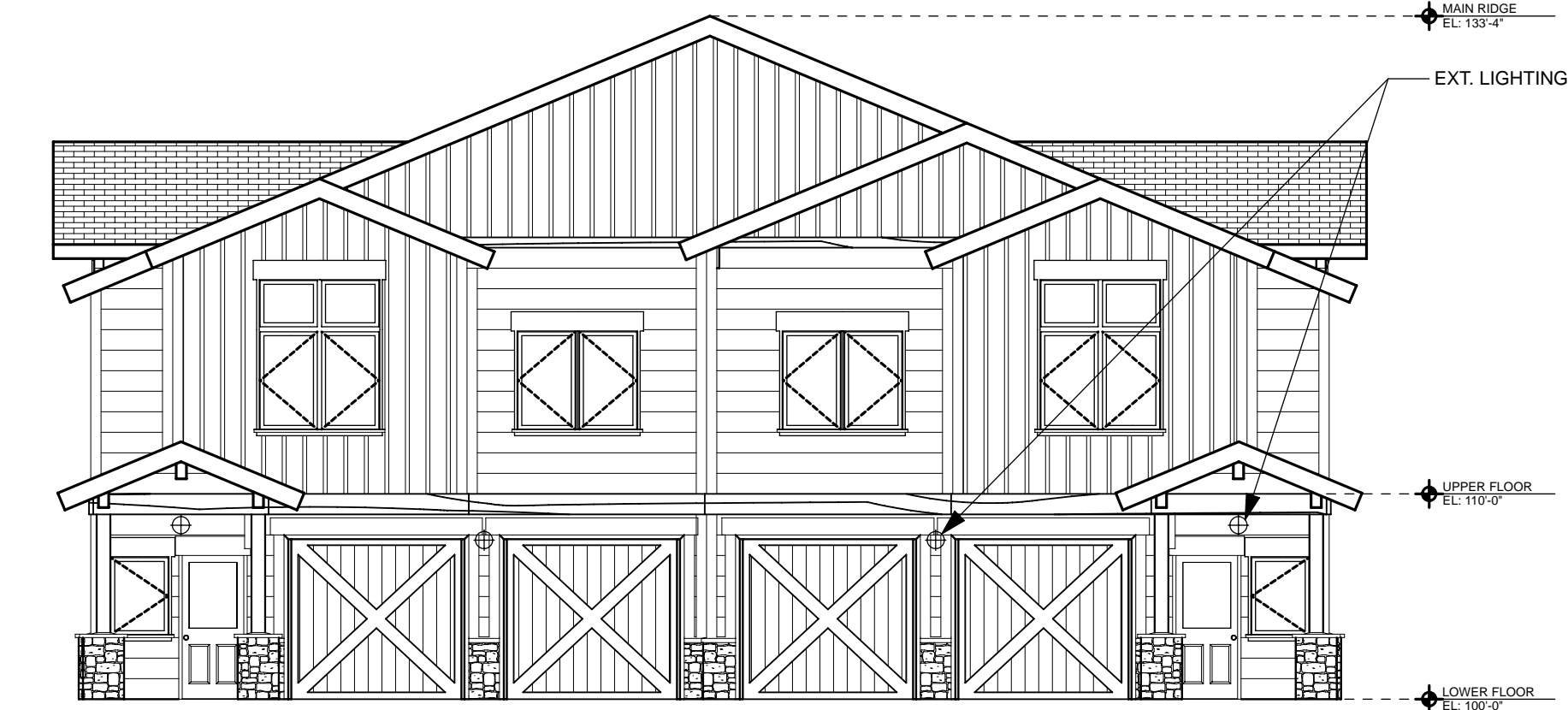
EXTERIOR MATERIALS SCHEDULE		
ITEM	MATERIAL	COLOR
ROOF:	40 Y. COMPOSITION SHINGLES	SEE COLOR BOARD
EAVE/RAKE:	1X6 & 2X10, MTL/DRIP EDGE	
PRIMARY SIDING:	HORIZ. 2X12 WOOD	
1ST ACCENT SIDING:	VARIED WIDTH VERT. WOOD	
DOORS/WINDOWS:	ALUM. CLAD WOOD	
DOOR/WINDOW TRIM:	1X10 W/ 2X HOOD & SILL.	
OUTSIDE CORNER TRIM:	2X6	
INSIDE CORNER TRIM:	2X2	
DECKS/RAILS:	COMP. RAILS AND NEWELS COMPOSITE DECKING	
EXPOSED BEAMS/COL:	GLU-LAM & TIMBER	
STONE BASE:	NATURAL MOSS ROCK	



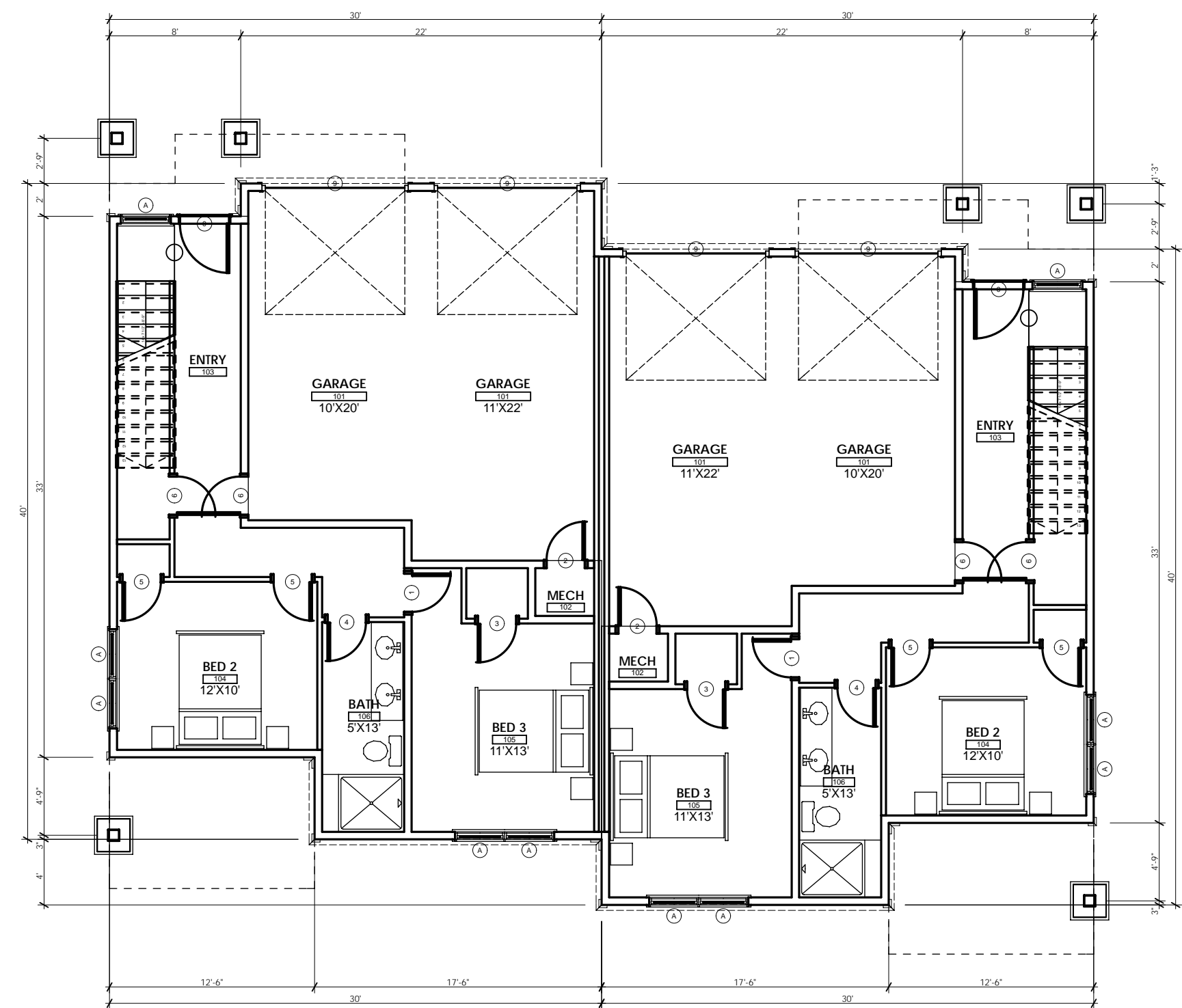
2. UPPER FLOOR  
SCALE: 1/8" = 1'-0"



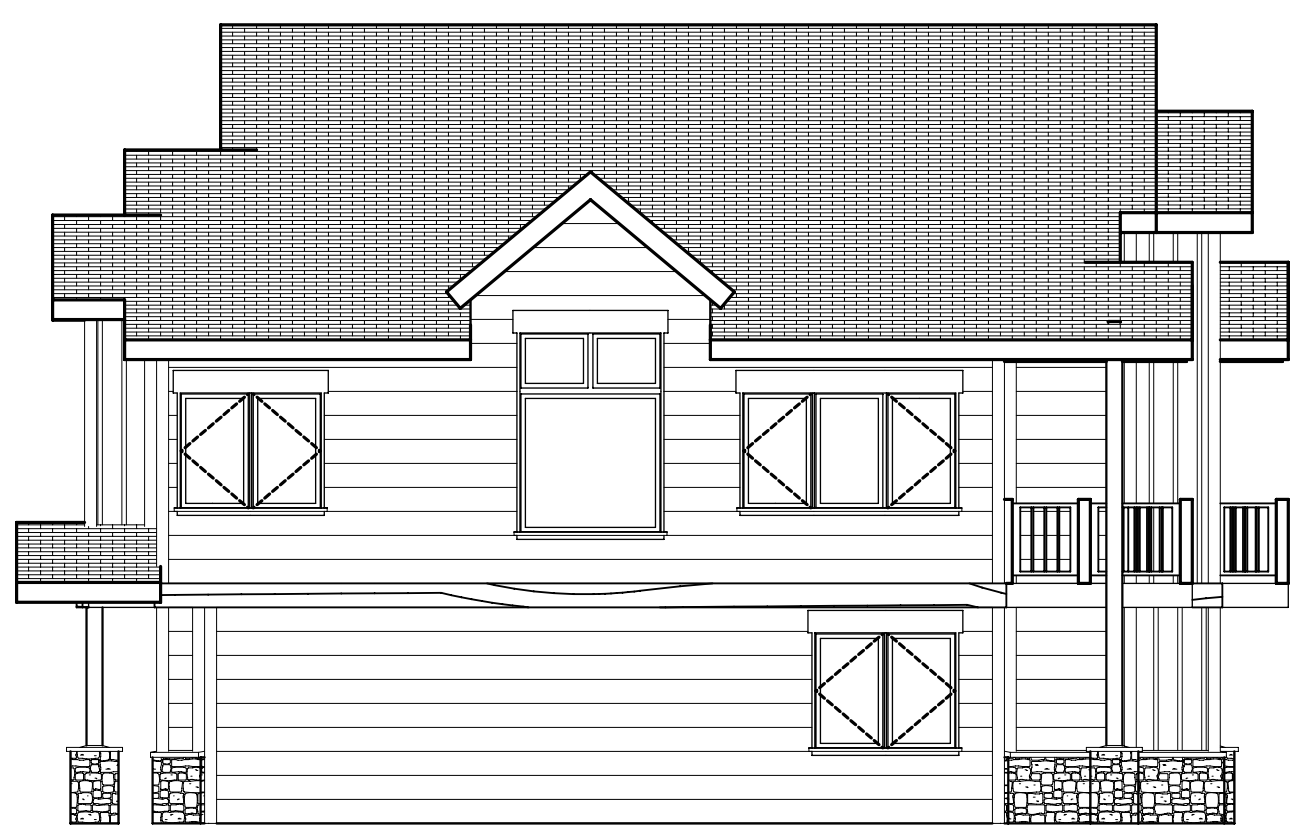
2. EAST ELEVATION  
SCALE: 1/8" = 1'-0"



1. NORTH ELEVATION  
SCALE: 1/8" = 1'-0"



1. LOWER FLOOR  
SCALE: 1/8" = 1'-0"

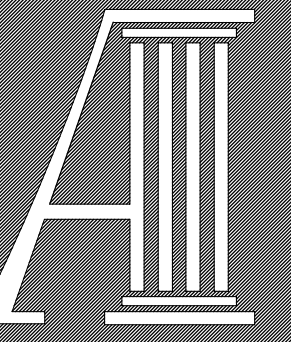


4. WEST ELEVATION  
SCALE: 1/8" = 1'-0"



3. SOUTH ELEVATION  
SCALE: 1/8" = 1'-0"

G:\AA Arch\Project 2010\14\1223 - Antler's Gulch\Drawings\Arch Drawings  
FILE: 1223 - Antler's Gulch.dwg  
PLOT DATE: 5/17/2012



ARAPAHOE  
ARCHITECTS, P.C.

P.O. BOX 4780  
BRECKENRIDGE, CO 80424  
(970)453-8474  
FAX: 453-8475

© COPYRIGHT  
REUSE OR REPRODUCTION  
OF THIS DOCUMENT IS NOT  
PERMITTED WITHOUT  
WRITTEN PERMISSION OF  
ARAPAHOE ARCHITECTS, P.C.

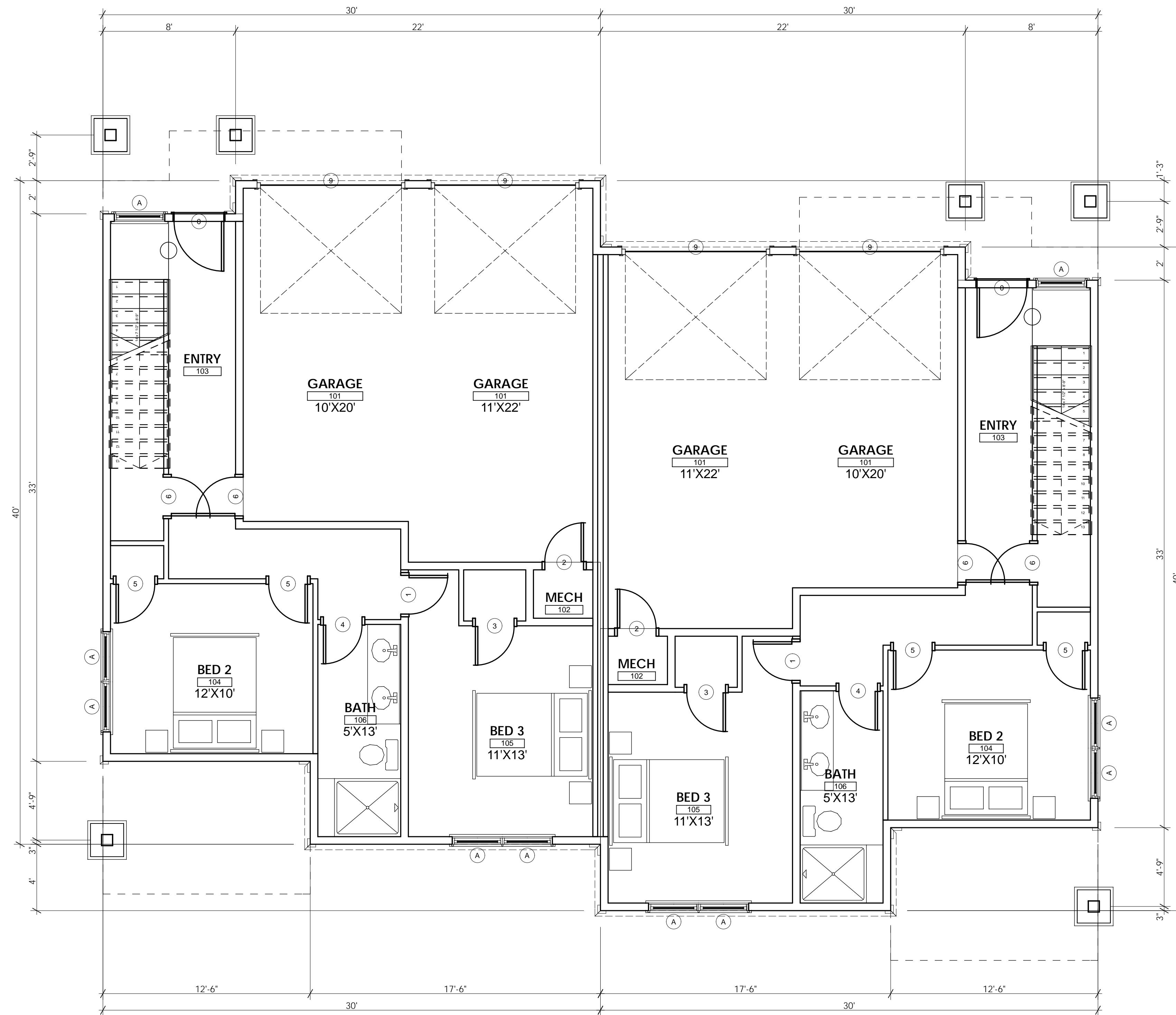
ANTLER'S GULCH - TRACT A  
62 CR 188  
SUMMIT COUNTY, COLORADO

LOWER FLOOR  
PLANS

JOB 1223  
DWN BY CM  
ISSUE  
4/9/12 - SITE PLAN

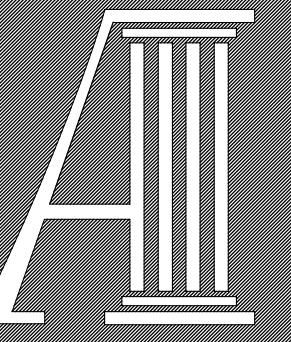
SHEET

A1



1. LOWER FLOOR  
SCALE: 1/4" = 1'-0"

BUILDING AREA			
	FINISHED	UNFINISHED	TOTAL
MAIN FLOOR	1,141	-	1,141
LOWER FLOOR	636	485	1,121
TOTAL :	1,777	485	2,262
NOTES:	UNFINISHED INCLUDES GARAGE, MECH		



ARAPAHOE  
ARCHITECTS, P.C.

P.O. BOX 4780  
BRECKENRIDGE, CO 80424  
(970)453-8474  
FAX: 453-8475

© COPYRIGHT  
REUSE OR REPRODUCTION  
OF THIS DOCUMENT IS NOT  
PERMITTED WITHOUT  
WRITTEN PERMISSION OF  
ARAPAHOE ARCHITECTS, P.C.

ANTLER'S GULCH - TRACT A  
62 CR 188  
SUMMIT COUNTY, COLORADO

UPPER FLOOR  
PLAN

JOB 1223  
DWN BY CM  
ISSUE  
4/9/12 - SITE PLAN

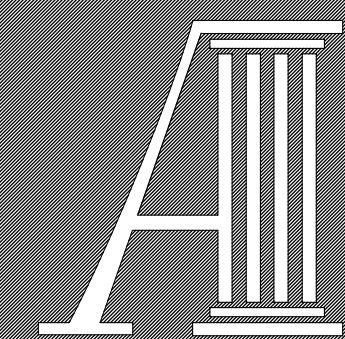
SHEET

A2



2. UPPER FLOOR  
SCALE: 1/4" = 1'-0"

BUILDING AREA			
	FINISHED	UNFINISHED	TOTAL
MAIN FLOOR	1,141	-	1,141
LOWER FLOOR	636	485	1,121
TOTAL :	1,777	485	2,262
NOTES:	UNFINISHED INCLUDES GARAGE, MECH		



ARAPAHOE ARCHITECTS, P.C.

P.O. BOX 4780  
BRECKENRIDGE, CO 80424  
(970)453-8474  
FAX: 453-8475

© COPYRIGHT  
REUSE OR REPRODUCTION  
OF THIS DOCUMENT IS NOT  
PERMITTED WITHOUT  
WRITTEN PERMISSION OF  
ARAPAHOE ARCHITECTS, P.C.

ANTLER'S GULCH - TRACT A  
62 CR 188  
SUMMIT COUNTY, COLORADO

ELEVATIONS

JOB 1223  
DWN BY CM  
ISSUE 4/9/12 - SITE PLAN

SHEET

A3

OF 10



2 EAST ELEVATION  
SCALE: 1/4" = 1'-0"



1 NORTH ELEVATION  
SCALE: 1/4" = 1'-0"

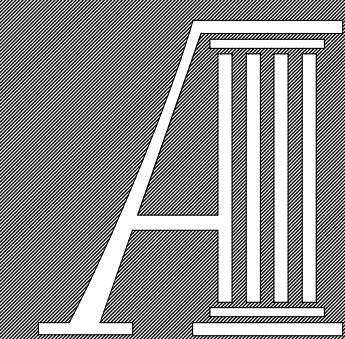


4 WEST ELEVATION  
SCALE: 1/4" = 1'-0"



3 SOUTH ELEVATION  
SCALE: 1/4" = 1'-0"

G:\AA Arch\Project 2010\14\1223 - Antler's Gulch\Drawings\Arch Drawings  
FILE: 1223\_Antler's Gulch.dwg



ARAPAHOE  
ARCHITECTS, P.C.

P.O. BOX 4780  
BRECKENRIDGE, CO 80424  
(970)453-8474  
FAX: 453-8475

© COPYRIGHT  
REUSE OR REPRODUCTION  
OF THIS DOCUMENT IS NOT  
PERMITTED WITHOUT  
WRITTEN PERMISSION OF  
ARAPAHOE ARCHITECTS, P.C.

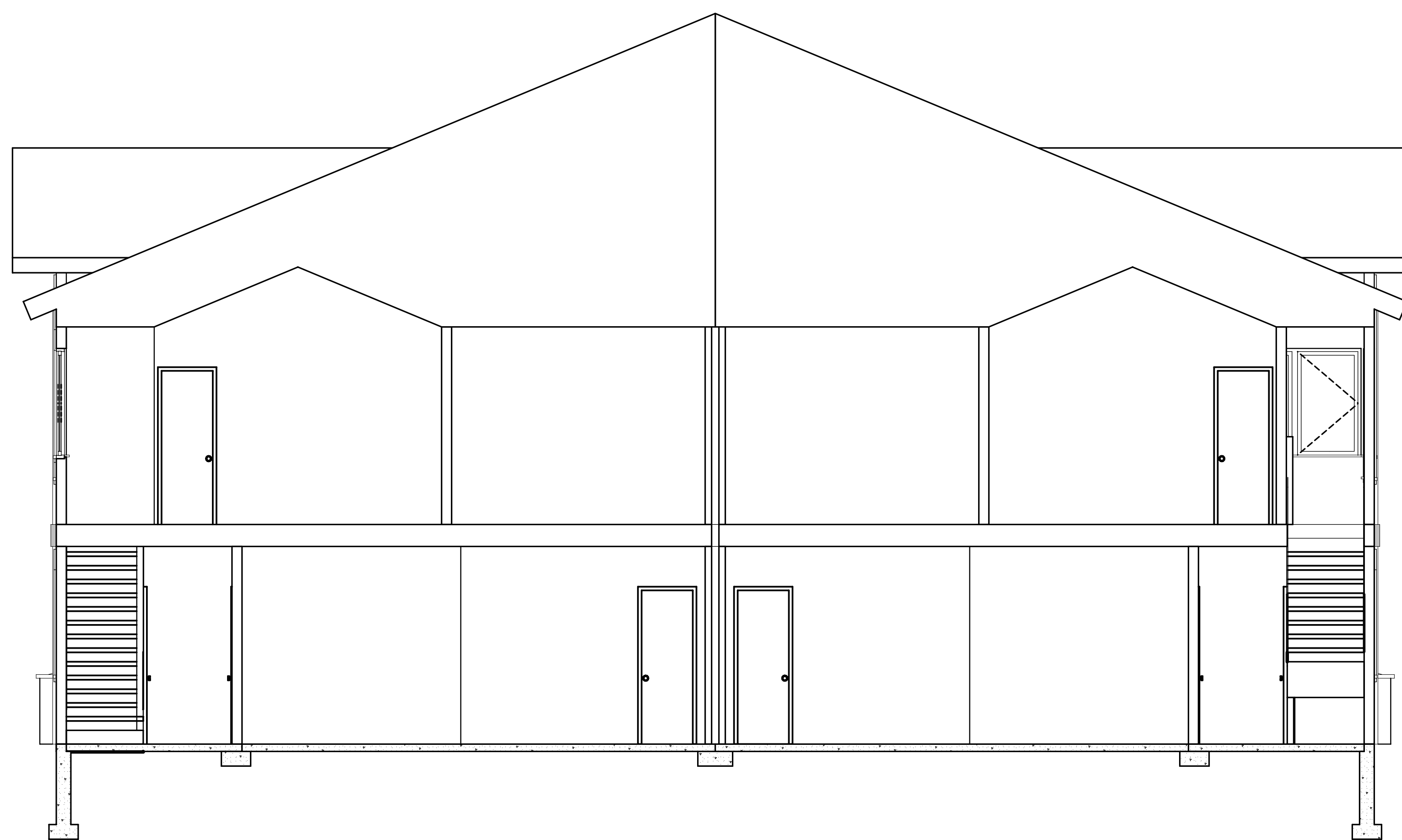
ANTLER'S GULCH - TRACT A  
62 CR 188  
SUMMIT COUNTY, COLORADO

SECTIONS

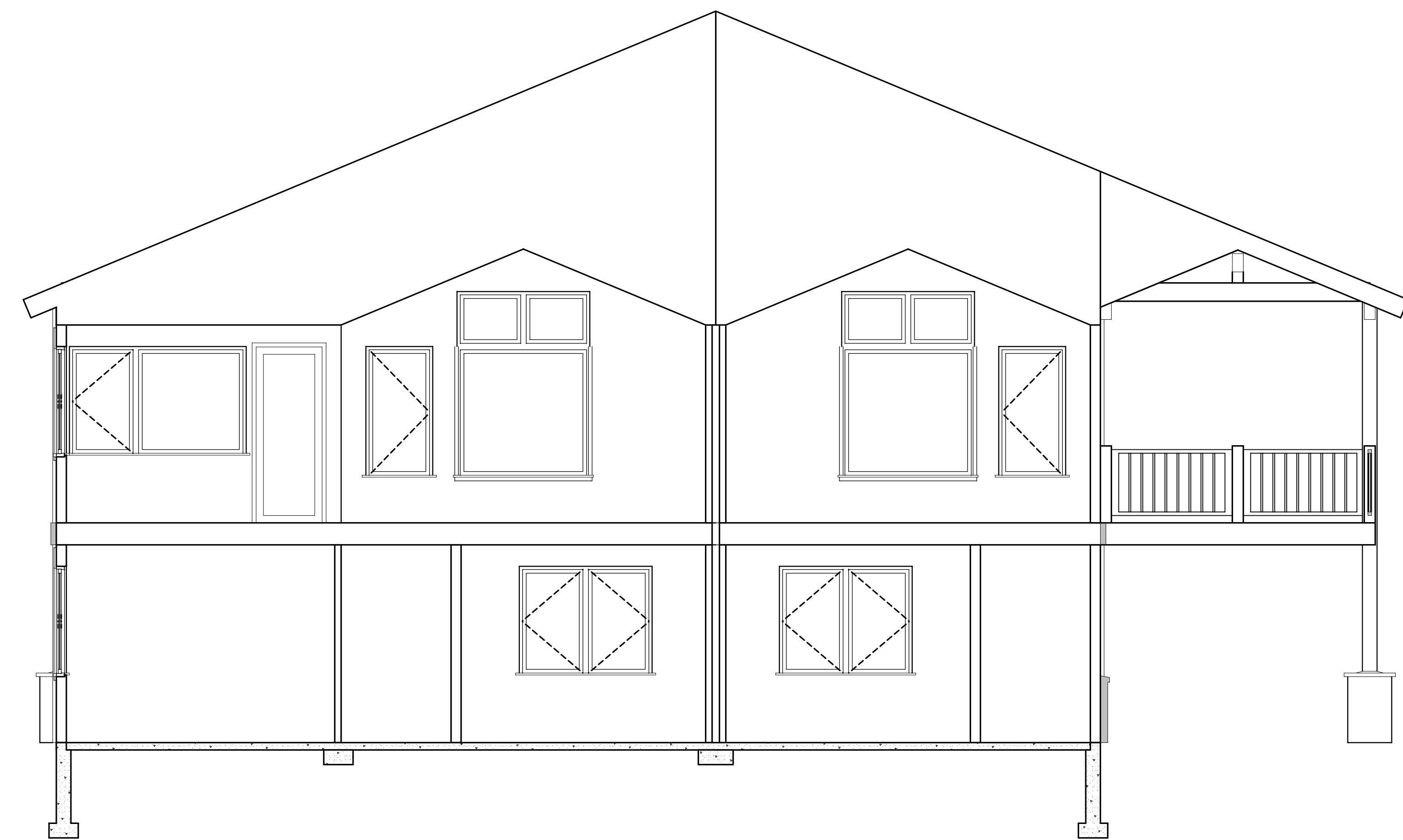
JOB 1223  
DWN BY CM  
ISSUE 4/9/12 - SITE PLAN

SHEET

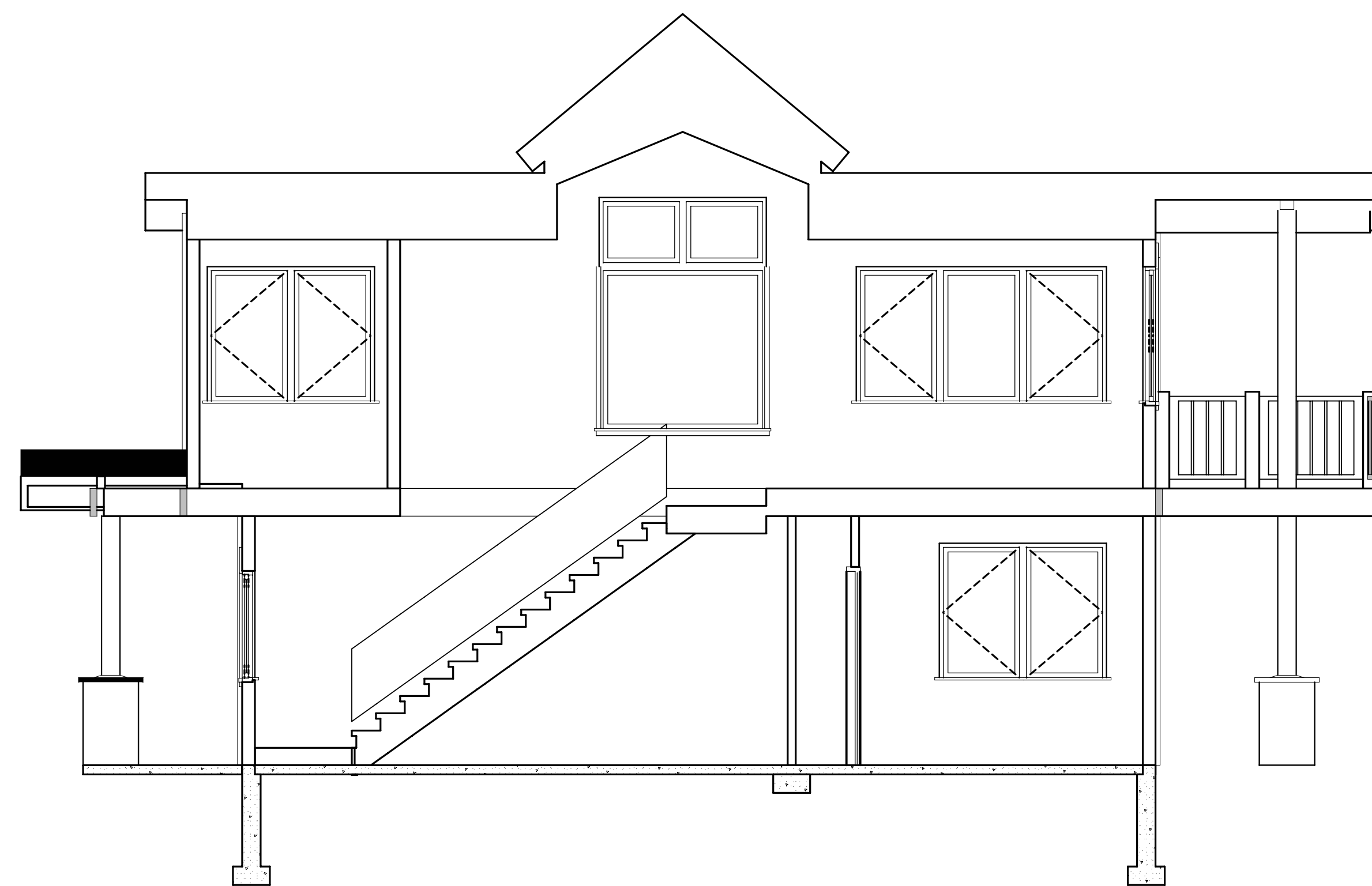
A4



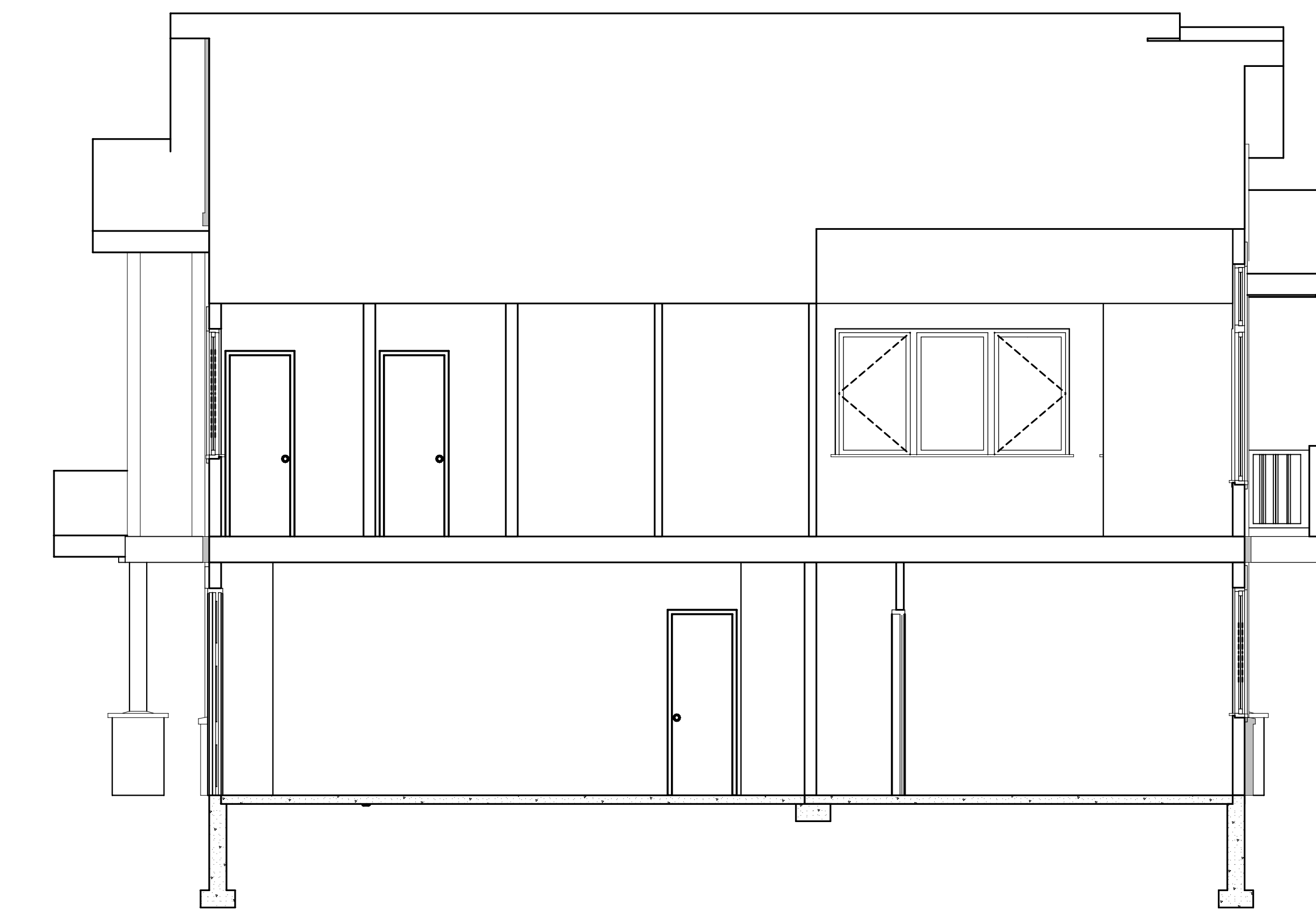
1 SECTION  
SCALE: 1/4" = 1'-0"



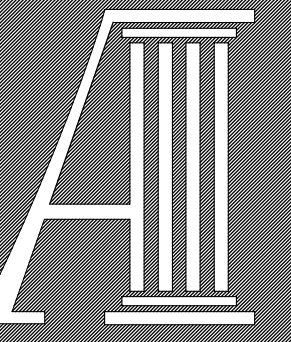
2 SECTION  
SCALE: 1/4" = 1'-0"



3 SECTION  
SCALE: 1/4" = 1'-0"



4 SECTION  
SCALE: 1/4" = 1'-0"



ARAPAHOE  
ARCHITECTS, P.C.

P.O. BOX 4780  
BRECKENRIDGE, CO 80424  
(970)453-8474  
FAX: 453-8475

© COPYRIGHT  
REUSE OR REPRODUCTION  
OF THIS DOCUMENT IS NOT  
PERMITTED WITHOUT  
WRITTEN PERMISSION OF  
ARAPAHOE ARCHITECTS, P.C.



Front Perspective  
SCALE: 1:0.80



Rear Perspective  
SCALE: 1:0.67

ANTLER'S GULCH - TRACT A  
62 CR 188  
SUMMIT COUNTY, COLORADO

PERSPECTIVES

JOB 1223  
DWN BY CM  
ISSUE  
4/9/12 - SITE PLAN

SHEET

A5